

1
2
3
4
5
6
7
8
9
10
11
12
13
14
15
16
17
18
19
20
21
22
23
24
25
26

HON. RICARDO S. MARTINEZ

UNITED STATES DISTRICT COURT
WESTERN DISTRICT OF WASHINGTON
AT SEATTLE

CASCADE YARNS, INC., a Washington Corporation,

Plaintiff,

vs.

KNITTING FEVER, INC., a New York Corporation, DESIGNER YARNS, LTD., a corporation of England, FILATURA PETTINATA V.V.G. DI STEFANO VACCARI & C. (S.A.S.), and entity organized or existing under the laws of Italy, SION ELALOUF, an individual, DIANE ELALOUF, an individual, JAY OPPERMAN, an individual, DEBBIE BLISS, an individual, DAVID WATT, an individual and DOES 1-50,

Defendant.

Case No. 2:10-cv-00861 RSM

REPLY DECLARATION OF ROBERT J. GUTE IN SUPPORT OF CASCADE YARNS, INC.’S SECOND MOTION FOR LIMITED EXPEDITED DISCOVERY

**Note On Motion Calendar:
December 24, 2010**

I, Robert J. Gute, declare as follows:

1. I am an attorney, admitted to practice before all of the courts of the State of Washington and this court, and am Of Counsel at Squire, Sanders & Dempsey L.L.P., counsel of record for Plaintiff Cascade Yarns, Inc. (“Cascade”) in this action. This declaration is based on my personal knowledge and, if called on to do so, I would and could testify competently as to the matters set forth herein.

1
2
3
4
5
6
7
8
9
10
11
12
13
14
15
16
17
18
19
20
21
22
23
24
25
26

2. Attached hereto as Exhibit A is a true and correct copy of a page from www.knittingfever.com accessed on December 23, 2010 still reflecting “new colors” of Kashmir DK by Louisa Harding as available for sale from KFI as of this date.

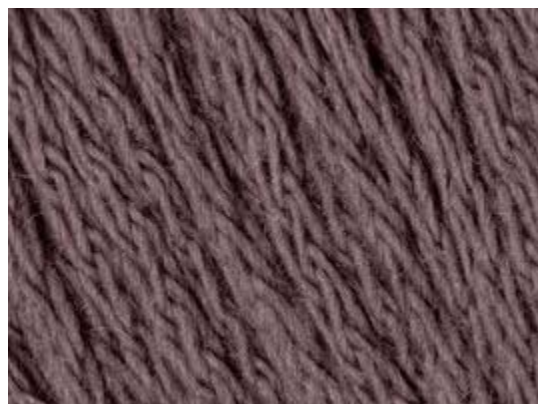
I declare under penalty of perjury under the laws of the United States of America and the state of Washington that the foregoing is true and correct.

Executed on December 23, 2010 at San Francisco, California.

/s/ Robert J. Guite
ROBERT J. GUILTE

EXHIBIT A

Kashmir DK by Louisa Harding



Color #37 - Warmth

\$10.35

[Buy](#) [Find a store](#)

Fiber: **55% Wool 10% Cashmere 35% Microfiber** Yardage: **116** Stitches: **5.5** Needle size: **6** Ball weight: **50g**

[Print colors](#)



#35 - Spruce



#36 - Saffron



#37 - Warmth



#38 - Napa



#1 - White



#25 - Midnight Blue



