



Flower Tote

Using Cascade Pastaza



Designed
By
Laura Farson

Mark a square at each corner as shown in the illustration.

Skill Level: Intermediate

Finished Size 7 x 10 x 3-1/2"

Materials

MC: 1 skein Cascade Pastaza Paints (50% Llama, 50% Wool, 100 gm, 132 yards)
Blue/Green #9826

CC: 1 skein Cascade 128 (100% Peruvian Highland Wool, 128 yards, 100 gm)
Green #9430

Strap and Loop: 1 skein Cascade 220(100% Wool, 220 yards, 100 gm) Green
?????

Two 16" US #10 circular needles

8 stitch markers

Blunt sewing needle

Cord Stop (Dritz) for closure

8 Eyelets

1/2 yard 45" wide lining fabric (a firm fabric like denim works well)

Interfacing for Base: 3-1/2" x 7" Pellon™ or equiv.

Sewing needle and thread to match the lining

Gauge: 9 sts and 10 rounds = 2" in Large Stripe Pattern

Stitch patterns

Large Check Pattern

Rnd 1: *K2 MC, K2 CC* repeat * to end

Rnd 2: repeat Rnd 1

Rnd 3: *K2 CC, K2 MC* repeat * to end

Rnd 4: repeat Rnd 3

Repeat these 4 rounds

Large Stripe Pattern

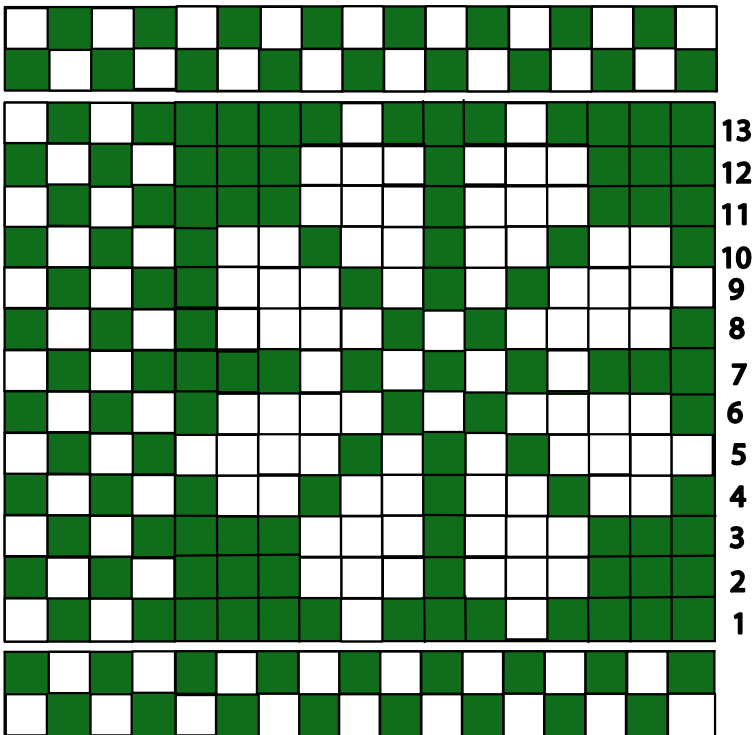
K2 MC, K2 CC repeat * to *

Small Check Pattern

Rnd 1: *K1 MC, K1 CC* rep * to end

Rnd 2: *K1 CC, K1 MC * rep * to end

Flower Pattern



Background

This pattern is knit with one strand in each hand which creates a dominance of the CC yarn. It's worked in the round on smaller needles for firmness.

Upper Edge

Cast on 100 stitches (not counting the slip knot) with the long tail cast on as follows: With a yarn end of each color, make a slip knot on one circular needle. Place the CC in the left hand and the MC in the right. Cast on with the two colors. Remove the slip knot before joining. Join by slipping the first st on the left needle purl wise onto the right needle.

Rnds 1-3: Knit alternating CC and MC strands as in Fair Isle knitting, CC strand in the left hand, or pick up CC consistently under the MC strand.

Rnds 4-9: Knit in Large Check Pattern

Rnds 10 -31: Knit Large Stripe Pattern

Keep the CC in the left hand and the MC in the right as in Rnds 1-3 above

Rnd 32- 35: M1, Alternate MC and CC in small check pattern, (101 sts)

Rnd 36: M1 (102sts), pm, Begin Rnd 1 of the Flower pattern graph, placing a marker between each section (6)

Rnds 37 – 48: Continue rnds 2-13 of graph

Rnds 49 – 50: Alternate MC and CC in Small check pattern

Rnd 50: Continue in sm check patt

Bottom

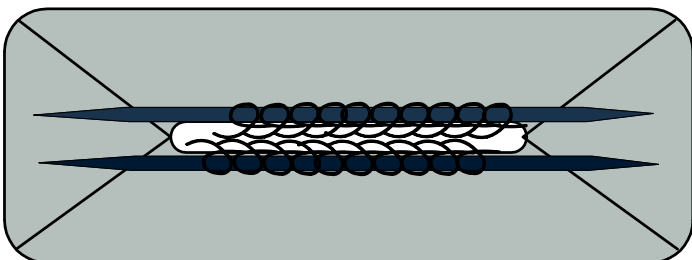
Divide the stitches into four groups (17st ,m,34st ,m,17st,m, 34st, m) by removing markers as follows: *Slip 17 sts, slm, sl 17 remove m, slip 17 sts, slm*, Insert 2nd ndl, repeat * to *

Decrease Round

Alternating CC and MC, *K to 2 sts before m, SSK, sm, K2tog* repeat * to * for the rnd. Alternate rnds, there will be sts of the same color next to each other. Repeat this decrease rnd until there are no stitches left between the markers.

Bottom Seam

Cut a 24” tail and thread the end through a blunt needle.
Kitchner seam the two sides together.



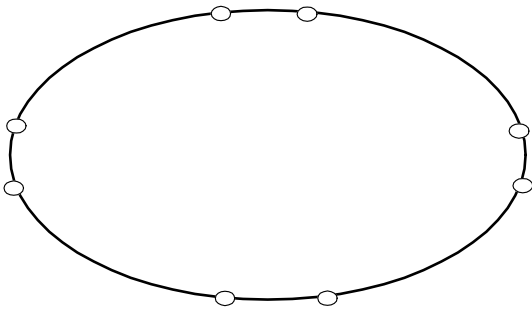
Push the needle to the inside.

With the inside out, weave the yarn tail in to secure. Cut any excess.

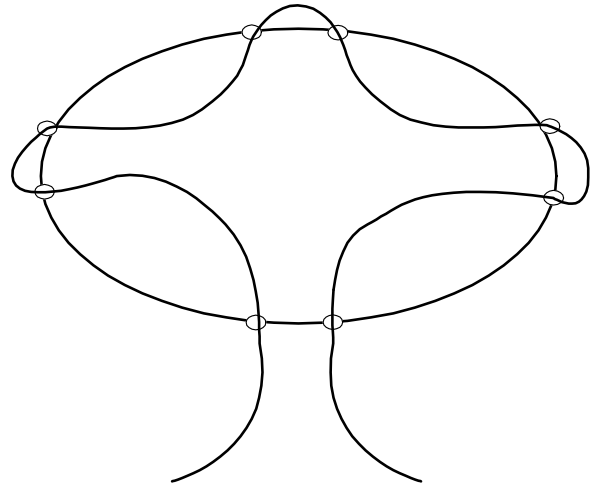
Drawstring

Knit one 1 yard length of I-cord

(An “Embellishknit™” I-cord maker is very useful.)



Eyelet Placement



Drawstring Path

Use a blunt tapered object (i.e. a pencil) to open the space between the yarns.
Insert the eyelets as shown above.
Insert the drawstring into the eyelets as in the diagram.
Place the Cord Lock on the two ends.
Secure with over hand knots

Strap

Knit three 2-yard lengths and one 6"-length of 4 st I-cord. If the cords are uneven, cut 2" extra length from the measurement and unravel to the measurement. Secure the ends by threading the strand through a blunt needle and weaving it through the loops.

Braid the three long I-cords Use a yarn strand to sew the 3 ends to each other.
Thread the braid through the side loops of the drawstring.
Sew the braid end to end to form a long loop.

Loop

Sew the loop to the top center back. Tuck it under the lining in the next step.

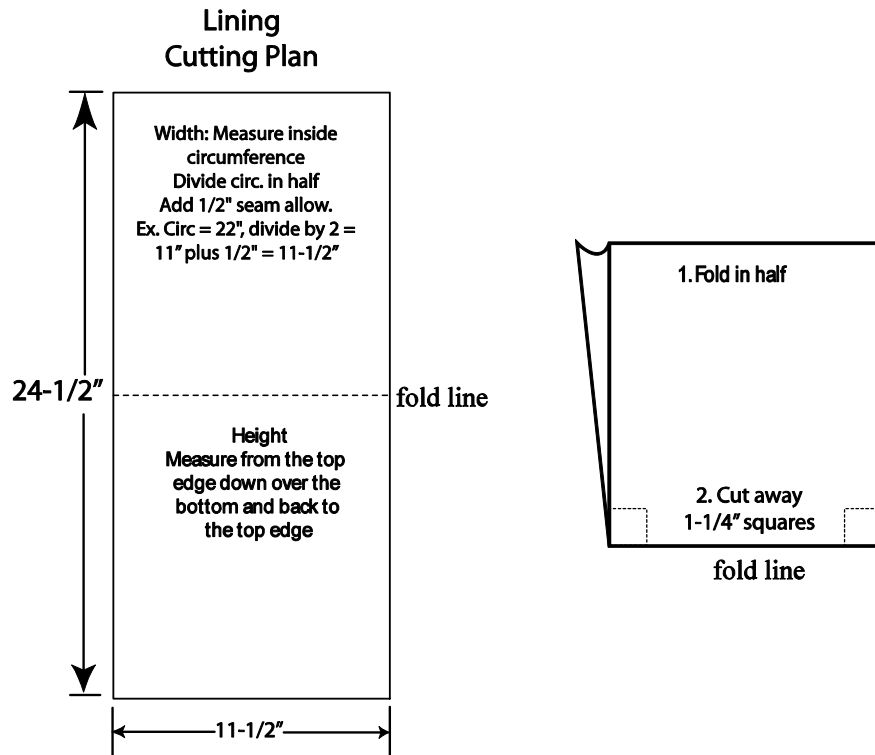
Lining

Measure the inside circumference of the tote. Divide in half. To this number add 1/2"

Example: The bag measures 22" around inside, half is 11" wide; add 1/2" = 11 1/2".

Measure the vertical size from the top to the bottom and back up.

Example: Top edge to bottom, across the bottom and back up to top edge = 24-1/2"



To calculate the square size: Take 1/2 the depth measurement less 1/2 " for seam allowances.

For a 3 1/2" wide bottom, divide by 2 = 1 3/4 " less 1/2 " = 1 1/4" square

Example: Cut the lining 11 1/2" x 24 1/2 ". With right sides together, fold the fabric in half

Cut and remove the 1 1/4 "corner squares as illustrated.

Sew 1/4" side seams. Match the bottom center fold line to the seam line and sew.

Press the seams open

Fold 1" of the top raw edge to the inside and press. Sew along the raw edge.

Cut a rectangle of interfacing (pellon™), the size of the bottom and insert it.

Insert the lining in the tote and pin in place. With sewing needle and thread, sew the top edge of the lining to the inside of the tote.

Tack the bottom corners.