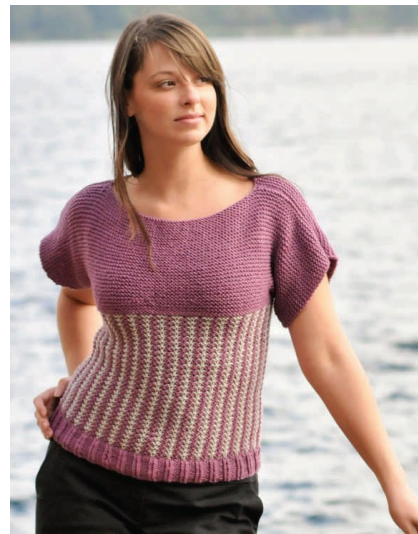




A141

220 Superwash
Slip Stitch Short Sleeve Top



Designed By Nenah Galati

220 Superwash Slip Stitch Short Sleeved Top

By Nenah Galati

This is such a fun project, easy to knit and very stylish to wear.

Materials Recommended:

Size Small (32-34), (Medium 34-36, Large 36-38)

2 Skeins of 220 Superwash # 881 (MC), 1 Skein of 220 Superwash #875 (CC)

For large size 3 Skeins main color, 1 Skein contrasting color

Size 8, 24" needle, (whatever need to achieve gauge)

2 St markers, different colors, a tapestry needle

Gauge 4 Sts/Inch

Small CO 144, (152, 160)

With Color MC: CO half Sts 72 (76, 80) place marker; CO remaining Sts place different colored marker (this is beginning marker). Join without twisting.

Ribbing: K2tbl means to K2 using the back loop

Rnd 1: K2tbl, P2

Repeat this 2" or desired length of ribbing

With MC: (Sl 1- slip one stitch); slip all Stitches as if to Purl

Rnd 1: *K3, Sl 1* to last St, Sl 1

Rnd 2: *P3, Sl 1* to last St, P1

Change to CC:

Rnd 3: K1, *Sl 1, K3* to last 2 Sts, K2

Rnd 4: P1, *Sl 1, P3* to last 2 Sts, P2

Continue changing colors and repeat these 4 rounds for 13", (14", 15")

Divide Front and Back:

If you have another needle the same size you are using, place Sts on this needle; or you may place on a holder or a piece of yarn:

K to 1st Stitch marker, place these Sts on needle or holder, you will now be knitting back and forth on the remaining Sts.

Back: Cast on 22(26,30) Stitches using working yarn, K to end***CO 22(26, 30) Sts are beginning of new row.***

Using garter Stitch, K every row, continue for 9", 10", 11" entire piece will now measure 22"(24', 26")

Boat Neck Shaping:

K32 (40, 48) Sts place on holder bind off to last 32, 40, 48 Sts, K 32 place on holder, cut yarn.

Repeat this process for the front sts that you placed on a holder or second needle.

Shoulder Seams:

Place 32 stitches from front left shoulder and back right shoulder on needles, perform the 3 needle bind off by placing garment right sides together, using 3needle, K St from front and back needle together and bind off.

Sleeves:

Sew seam under sleeve together by laying sleeves flat side by side and using invisible seam to sew together. Repeat for the other sleeve.