

Cascade Soft Spun
Loon Lake Pullover



Designed by Diane Zangl

Loon Lake Pullover

Designed exclusively for Cascade Yarns by Diane Zangl

Traditional yoke styling defines the silhouette of this cozy pullover. The dark background highlights the lighter shades of the zig-zag pattern. Bright purl stitches, a departure from the traditional lustkofte or 'lice' in Scandinavian patterns, accent the body, sleeves, and sections of the yoke. Classic 2/2 ribbing is used on all edges.

The circular method of construction means there are only two small underarm seams to sew.



Intermediate



Intermediate

SKILL LEVEL

SIZE

Woman's small (medium, large, extra-large) Instructions are given for smallest size, with larger sizes in parentheses. When only 1 number is given, it applies to all sizes. Model shown in size small

FINISHED MEASUREMENTS

Chest: 36 (40, 44, 48)"

Armhole depth: 8¾ (9, 9½, 10)"

Side to underarm: 14 (14, 15, 15)"

Sleeve length: 18 (18½, 18½, 19)"



Medium

MATERIALS

Cascade Soft Spun, 100% Peruvian Highland wool (100g/197 yds per hank): 5 (5, 6, 7) hanks #2830 Bright Blue (MC), 1 hank **each** #2857 Lt Blue Heather (A), #2808 White (B), #2809 Lt Brown Heather (C)

Size 7 (4.5mm) 30", 16" and double-pointed needles **or size needed to obtain gauge**

Stitch markers and holders

GAUGE

18 sts x 24 rows = 4" in Scattered Seed pat

To save time and ensure proper fit, take time to check gauge.

DESIGNER NOTES

Work sleeves first and use them as your gauge swatch

To avoid puckering of colorwork, carry yarn loosely across back of work.

Change to shorter needles as necessary on yoke.

STITCH GLOSSARY

Pm: Place marker.

W&T (Wrap and Turn): Bring yarn to front of work between needles, sl next st purlwise to RH needle, take yarn to back of work, replace st to LH needle, turn. On following row, wrapped st is worked tog with the st it is wrapped around.

2/2 Rib

All Rnds: K1, *p2, k2; rep from * to last 3 sts, p2, k1.

Scattered Seed Pat (multiple of 6 sts)

Rnds 1-4: With MC, knit.

Rnd 5: *K5 MC, K1 A; rep from * around.

Rnd 6: *K5 MC, P1 A; rep from * around

Rnds 7-10: With MC, knit.

Rnd 11: K2 MC, *K1 A, K5 MC; rep from * to last 4 sts, K1 A, K3 MC.

Rnd 12: K2 MC, *P1 A, K5 MC; rep from * to last 4 sts, P1 A, K3 MC.

Rep Rnds 1-12 for pat.

SLEEVES

With MC and dpn, cast on 36 (40, 44, 48) sts. Place marker between first and last st.

Work even in 2/2 Rib for 2½", inc 5 sts evenly on last rnd – 41 (45, 49, 53) sts.

Knit 4 rnds.

Set up pat

Next rnd: K2 (4, 3, 2) MC, *K1 A, K5 MC; rep from * around, ending with K2 (4, 3, 2) MC.

Inc 1 st each side of marker on next and every following 6th rnd 9 (9, 10, 10) times, working added sts into Scattered Seed Pat – 59 (63, 69, 73) sts.

Work even until sleeve measures approximately 18 (18½, 18½, 19)" from beg, ending with Rnd 3 or 9 of pat.

Shape underarm

With MC, knit to 6 (7, 8, 9) sts before maker, bind off 12 (14, 16, 18) sts for underarm – 47 (49, 53, 55) sts.

Cut yarn, leaving an 18" end for sewing underarm. Sl sts to holder.

BODY

With MC and longer circular needle, cast on 160 (176, 196, 216) sts. Join without twisting, placing marker between first and last st. Place second marker after st #80 (88, 98, 108) to denote right underarm 'seam'.

Work even in 2/2 Rib for 2", inc 2 (4, 2, 0) sts on last rnd – 162 (180, 198, 216) sts.

Work even in Scattered Seed pat until body measures approximately 14 (14, 15, 15)" from beg, ending with Rnd 3 or 9 of pat.

Shape underarm

With MC, *knit to 6 (7, 8, 9) sts before marker, bind off 12 (14, 16, 18) sts for underarm, rep from * once, knit to end of rnd – 69 (76, 83, 90) sts each for front and back. Remove markers.

Join for yoke

With MC, knit across sts of left sleeve, pm, front, pm, right sleeve, pm, back, place end-of-rnd marker – 232 (250, 272, 290) sts.

Knit 1 rnd, dec 4 (4, 2, 2) sts evenly – 228 (246, 270, 288) sts.

Referring to chart and making sure to center pat on front, work even in color pat through Rnd 29.

Rnd 30: With MC, knit, dec 72 (78, 90, 96) sts evenly – 156 (168, 180, 192) sts.

Work chart Rnds 31-38.

Rnd 39: With MC, knit, dec 51 (58, 60, 62) sts evenly – 105 (110, 120, 130) sts.

Work chart Rnds 40-48.

Rnd 49: With MC, knit dec 25 (30, 32, 38) sts evenly – 80 (80, 88, 92) sts.

Shape back neck

Mark 15 (16, 18, 20) sts at center front. Remove all but end-of rnd marker. Work in MC only from this point.

Rnd 1: Knit to left neck marker, W&T.

Rnd 2: Purl to right neck marker, W&T.

Rnd 3: Knit to 3 sts before previous wrap, W&T.

Rnd 4: Purl to 3 sts before previous wrap, W&T.

Rnds 5 and 6: Rep Rnds 3 and 4.

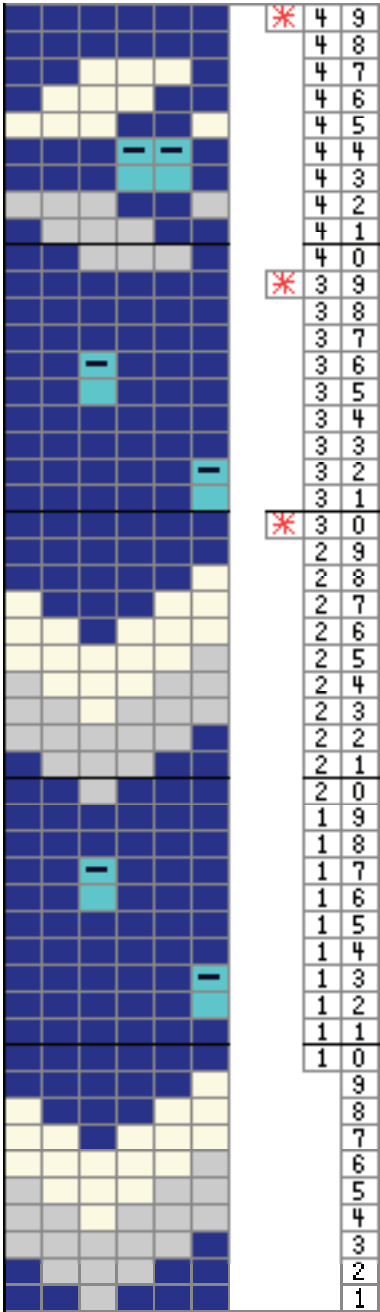
Rnd 7: Working each wrap with its 'parent' st, knit to end-of-rnd marker.

Remove front neck markers. Work even in 2/2 Rib for 5 rnds.




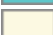


Bind off in pat.

FINISHING

Sew underarm seams.



Color Key

-  Bright Blue (MC)
-  Knit-Lt Blue Heather (A)
-  Purl-Lt Blue Heather (B)
-  White (B)
-  Lt. Brown Heather (C)
-  Dec on the rnd

