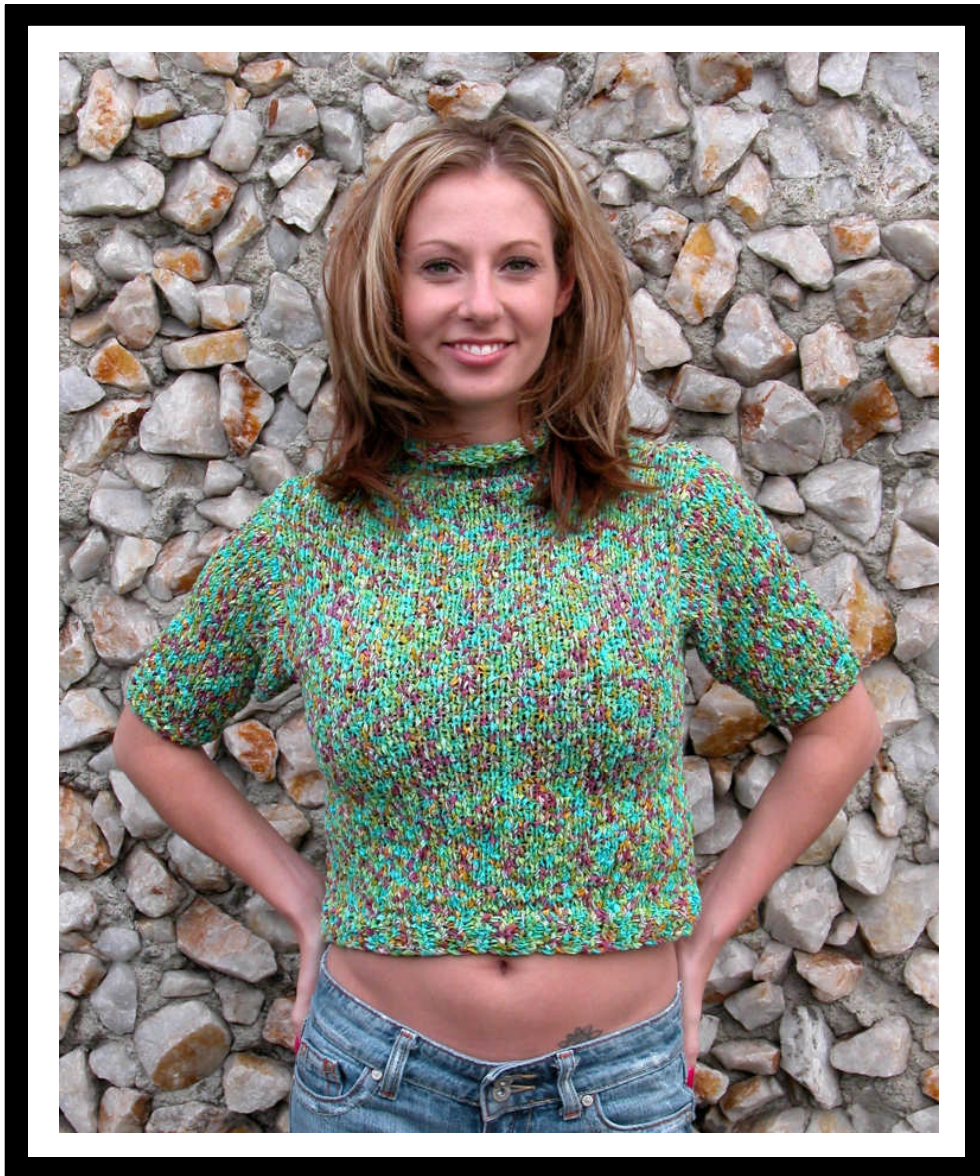




**Taormina Ribbon Sweater (C164)
Using Cascade Bollicine Taormina Pattern**



Taormina Ribbon Sweater (C164)

Designed by Dottie Chin

Materials: Bollicine Taormina Ribbon 9(9,10,10,11)
Knitting needles size 7 & 9

Gauge: 3.5 sts = 1"

Approximate finished size: 33(35,37,39)

Back

With smaller needle cast on 51(55,57,61,63) sts. Work in *k1, p1, rep from *, end k1. Work 7 rows. On 8th row, inc 7(6,8,7,8) evenly across row. 58(61,65,68,71)sts. Change to larger needle and work in stockinette stitch until piece meas 9.5(9.5,10,10,10.5)".

Armhole shaping

Bind off 3(4,4,5,5) sts at beg of next 2 rows. Dec 1 st each side, every other row 3 (3,4,4,5)times. Cont until piece ears 17.5(18,18.5,19,19.5)" from beg.

Shape shoulders

Bind off 4(4,4,4,4) sts beg of next 2 rows. Bind off 4(4,4,4,4) sts next 2 rows. Bind off 4 (4,5,5,5) sts next 2 rows. Bind off remaining 22(23,23,24,25) sts.

Front

Work as for back, including all shaping and at the same time: when piece meas 17 (17.5,18,18.5,19)" begin neck shaping: Work to center 18(19,19,20,21) sts, attach a 2nd ball of yarn and bind off 18(19,19,20,21) sts. Finish row. Work both sides at same time. Dec 1 st at each neck edge, every other row 2x. Cont until piece meas 17.5 (18,18.5,19,19.5)" from beg. Shape shoulders as for back.

Sleeves

With smaller needle, cast on 33(35,37,39,39) sts. Work same as for back rib. On 8th row, inc 5(5,5,5,5) sts evenly across row. Change to larger needle, work one RS row. For 1st and 3rd sizes: Inc 1 stitch every 3rd row 8x. For 2nd, 4th and 5th sizes: Inc 1 stitch every 2nd row 6x, then every 4th row 3x. Cont until piece meas 6.5(7,7.5,7.5,8)". Shape cap: Bind off 3(4,4,5,5) sts each side. Dec 1 st each side, every other row 3(3,4,4,5)x. Dec 1 st each side every row 8(10,8,4,5)x. Bind off 2 sts at the beg of next 4 rows. Bind off remaining sts.

Join seams.

Rolled Neck Finishing

With smaller needle and RS facing, pick up 55(57,59,61,63) sts evenly around. Work in the round in stockinette stitch for at least 3-4". Bind off loosely.