



W335

Cascade Eco Duo
Cabled Pullover



Designed By Melissa Leapman

EcoDuo Cabled Pullover

Designed by Melissa Leapman
For Cascade Yarn Company

Skill Level

Intermediate

Sizes

Small (Medium, Large, 1X, 2X). Instructions are for smallest size, with changes for other sizes noted in parentheses as necessary.

Finished Measurements

Bust: 34 (38, 41 ½, 45, 49)"

Total length: 24 (24, 24 ½, 25, 25 ½)"

Materials

- ◆ Cascade Yarn's *EcoDuo*, 6 (6, 7, 8, 8) hanks
- ◆ One pair each of sizes 6 and 8 knitting needles
- ◆ One cable needle

Gauge

In Stockinette St Patt with larger needles, 17 sts and 26 rows = 4".

With larger needles, Central Cable Panel measures 3 ¾" across.

To save time, take time to check gauge.

Rib Patt *(over mult. 4 + 2 sts)*

Row 1 (RS): K2, *P2, K2. Repeat from * across.

Row 2: P2, *K2, P2. Repeat from * across.

Repeat Rows 1 and 2 for patt.

Stockinette St Patt

Row 1 (RS): Knit across.

Row 2: Purl across.

Repeat Rows 1 and 2 for patt.

Central Cable Panel *(over middle 28 sts)*

See chart.

Notes

- For fully-fashioned decreases: on RS rows: K2, SSK, work across in patt as established until 4 sts rem in row, ending row with K2tog, K2; on WS rows: P2, P2tog, work across in patt as established until 4 sts rem in row, ending row with SSP, P2.
- For fully-fashioned increases: K2, M1, work across in patt as established until 2 sts rem in row, ending row with M1, K2.

Back

With smaller needles, CO 86 (94, 102, 110, 118) sts.

Beg Rib Patt, and work even until piece measures approx 1 ½" from beg, ending after WS row.

Set Up Patts

Next Row (RS): Change to larger needles, work Row 1 of Stockinette St Patt over first 29 (33, 37, 41, 45) sts, place marker, work Row 1 of Central Cable Panel over middle 28 sts, place marker, work Row 1 of Stockinette St Patt across to end row.

Cont even in patts as established until piece measures approx 15 ½" from beg, ending after WS row.

Shape Armholes

BO 4 (5, 6, 7, 8) sts at beg of next two rows, BO 2 (3, 4, 4, 5) sts at beg of next two rows, then work fully-fashioned decreases (see Notes) each side every row 0 (4, 4, 6, 6) times, then every other row 4 (2, 3, 3, 4) times—66 (66, 68, 70, 72) sts rem.

Cont even in patts as established until piece measures approx 23 (23, 23 ½, 24, 24 ½)" from beg, ending after WS row.

Shape Shoulders

BO 4 (4, 4, 5, 5) sts at beg of next four rows, then BO 4 (4, 3, 4, 5) sts at beg of next two rows—42 sts rem.

BO.

Front

Same as back until piece measures approx 21 (21, 21 ½, 22, 22 ½)" from beg, ending after WS row.

Shape Neck

Work across first 24 (24, 25, 26, 27) sts, join second ball of yarn and BO middle 18 sts, work across to end row.

Work both sides at once with separate balls of yarn, and BO 4 sts each neck edge once, BO 3 sts each neck edge twice, then dec 1 st each neck edge every row twice—12 (12, 13, 14, 15) sts rem each side.

Cont even, if necessary, until piece measures same as back to shoulders.

Shape Shoulders

Same as back.

Sleeves

With smaller needles, CO 42 sts.

Beg Rib Patt, and work even until piece measures approx 1 ½" from beg, ending after WS row.

Change to larger needles, beg Stockinette St Patt, and work fully-fashioned increases (see Notes) each side every tenth row 0 (0, 0, 0, 3) times, every twelfth row 0 (0, 0, 5, 6) times, every fourteenth row 0 (0, 5, 3, 0) times, every sixteenth row 0 (0, 2, 0, 0) times, every twentieth row 4 (4, 0, 0, 0) times, then every twenty-second row 1 (1, 0, 0, 0) times—52 (52, 56, 58, 60) sts.

Cont even until piece measures approx 18 ½" from beg, ending after WS row.

Shape Cap

BO 4 (5, 6, 7, 8) sts at beg of next two rows, then work fully-fashioned decreases (see Notes) each side every fourth row 6 (7, 6, 7, 8) times, then every other row 6 (4, 6, 5, 4) times—20 sts rem.

Work 0 (0, 1, 1, 0) row even.

BO 2 sts at beg of next four rows—12 sts rem.

BO.

Finishing

Sew shoulder seams.

Collar

With larger needles, CO 45 sts.

Set Up Patts

Work Row 1 of Stockinette St Patt over first 16 sts, place marker, slip next st with the yarn in back, place marker, work Row 1 of Central Cable Panel across to end row.

Next Row (WS): Work Row 2 of Central Cable Panel across first 28 sts, purl across 17 sts to end row.

Cont even in patts as established, slipping the marked st on RS rows and purling it on WS rows until the collar, when slightly stretched, fits sideways into the neck opening.

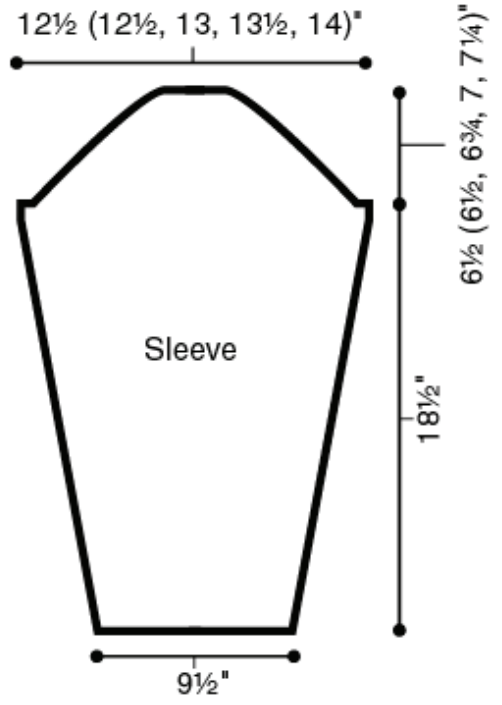
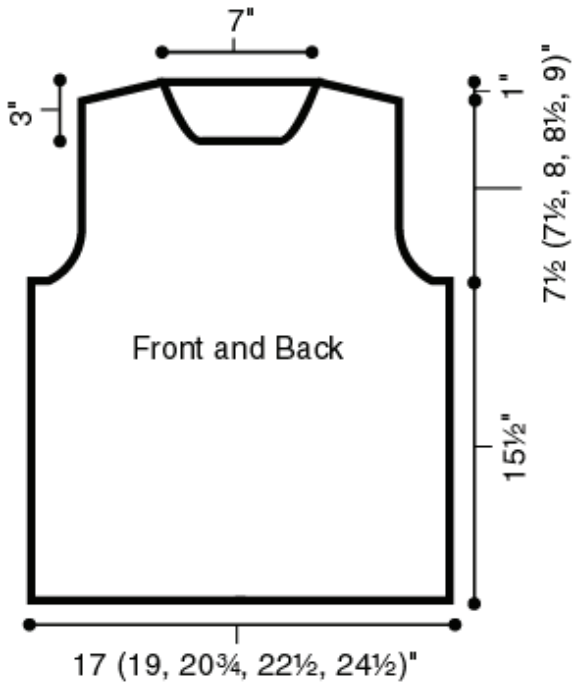
BO in patt.

Sew collar into neckline.

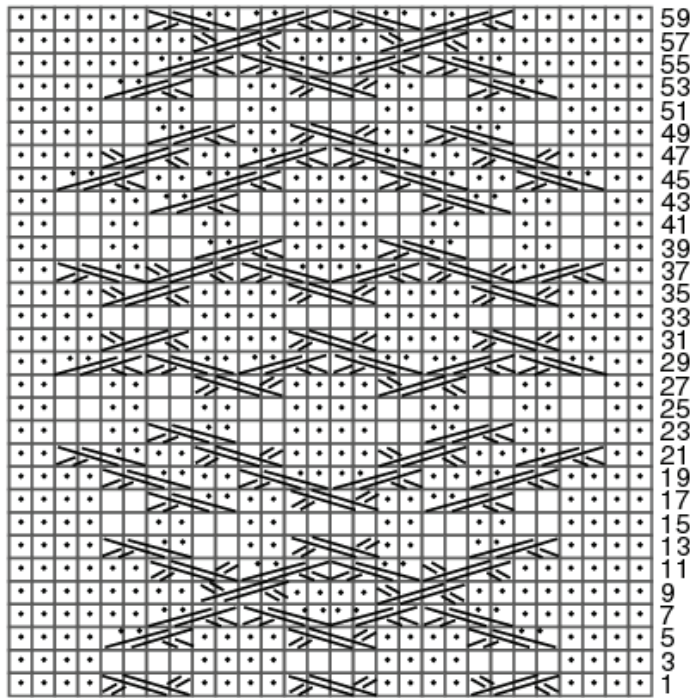
Fold facing to WS along slip st foldline, and *loosely* whipstitch to inside of neckline.

Set in sleeves.

Sew sleeve and side seams.



Central Cable Panel



NOTE: Only RS rows are shown on the chart; for WS row, knit the knit sts and purl the purl sts.

Stitch Key \square = K on RS; P on WS

\bullet = P on RS; K on WS

$\text{>>}<<$ = Slip 2 sts onto cn and hold in back; K2; K2 from cn

$\text{>>}<<$ = Slip 2 sts onto cn and hold in front; K2; K2 from cn

$\text{>>}<<$ = Slip 2 sts onto cn and hold in back; K2; P2 from cn

$\text{>>}<<$ = Slip 2 sts onto cn and hold in front; P2; K2 from cn