



Cascade Soft Spun  
La Bella Tunica



Designed by Faina Goberstein

## LA BELLA TUNICA

Designed by **Faina Goberstein**

### DESCRIPTION

A perfect fusion of a great yarn and a soft, stylish, and slightly A-shaped silhouette of this tunic make it very flattering to many body types. The main stitch pattern is formed with an interesting set of multidirectional cables mixed with seed stitch. To minimize seaming the body of the tunic, sleeves, and the collar are knit in the round. Sleeves are worked in stockinette stitch with the main motif running through the middle. The big cowl collar trimmed by a cable strip finishes the look of this feminine sweater.

**Finished Sizes:** 33 1/2 (36 1/4, 39, 42, 44 3/4, 47 1/2, 53)" bust circumference (includes about 1 1/2 " positive ease)

### MATERIALS

- 8 (8, 9, 10, 11, 12, 13) skeins of Cascade "Soft Spun" (100% Peruvian Highland Wool, 197 yds (180 m) in color #2825
- 29"-32" circular needle in size US 9 (5.5mm), or size to obtain gauge
- Set of 5 double-pointed needles in same size
- 24"-29" circular needle in size US 8 (5 mm)
- 32" circular needle in size US 10 (6 mm)
- Stitch marker
- Stitch holders
- Darning needle

### GAUGE

21 sts and 24 rnds = 4" (10 cm) in **cable motif pat** (after blocking) with middle-size needle.

20 sts and 25 rnds = 4" (10 cm) in **stockinette stitch** (after blocking) with middle-size needle.

### STITCH PATTERNS

#### Seed Stitch

(Worked over even number of sts)

**Rnd 1:** \*K1, p1; rep from \* around.

**Rnd 2:** \*P1, k1; rep from \* around.

#### Cable Motif Pattern for Body—See Chart 1

(Worked over a multiple of 18 sts, decreasing to multiple of 14 sts)

*Note: The cable panels are the same for all sizes. Shaping decreases are made between the cable panels by working p2tog in the reverse St st sections. The following description and Chart 1 show the shaping decreases for sizes: 33 1/2 (36 1/4, 39)" only with decreases made on Rnds 67 and 115. For sizes 42" and 44 3/4", work decreases on Rnds 69 and 117; for sizes 47 1/2" and 53", work decreases on Rnds 73 and 119.*

**Rnds 1-3 (RS):** \*P3, k6; rep from \* around.

**Rnd 4:** \*P3, c6f, p3, k6; rep from \* around.

**Rnds 5-8:** Rep Rnds 1-4.

**Rnds 9-11:** As Rnd 1.

**Rnd 12:** \*P3, c6f; rep from \* around.

**Rnd 13:** As Rnd 1.

**Rnd 14:** \*P3, [k1, p1] 3 times, p3, k6; rep from \* around.

**Rnd 15:** \*P3, [p1, k1] 3 times, p3, k6; rep from \* around.

**Rnds 16-23:** Rep [Rnds 14 and 15] 4 more times.  
**Rnd 24:** \*P3, [k1, p1] 3 times, p3, c6f; rep from \* around.  
**Rnds 25-27:** As Rnd 1.  
**Rnd 28:** \*P3, c6b p3, k6; rep from \* around.  
**Rnds 29 and 30:** As Rnd 1.  
**Rnds 31-34:** Rep Rnds 27-30 once more.  
**Rnd 35:** As Rnd 1.  
**Rnd 36:** \*P3, c6b p3, c6f; rep from \* around.  
**Rnds 37-47:** As Rnd 1.  
**Rnd 48:** As Rnd 12.  
**Rnds 49-51:** As Rnd 1.  
**Rnd 52:** \*P3, k6, p3, c6f; rep from \* around.  
**Rnd 53:** As Rnd 1.  
**Rnds 54-57:** Rep Rnds 50-53 once more.  
**Rnd 58:** \*P3, k6, p3, [k1, p1] 3 times; rep from \* around.  
**Rnd 59:** \*P3, k6, p3, [p1, k1] 3 times; rep from \* around.  
**Rnd 60:** \*P3, c6f, p3, [k1, p1] 3 times; rep from \* around.  
**Rnd 61:** As Rnd 59.  
**Rnd 62:** As Rnd 58.  
**Rnds 63-66:** Rnds 63-66: Rep Rnds 61 and 62 twice more.  
**Rnd 67 (Dec):** \*P2tog, p1, k6, p2tog, p1, [p1, k1] 3 times; rep from \* around.  
**Rnd 68:** \*P2, k6, p2, [k1, p1] 3 times; rep from \* around.  
**Rnd 69:** \*P2, k6, p2, [p1, k1] 3 times; rep from \* around.  
**Rnds 70-71:** \*P2, k6; rep from \* around.  
**Rnd 72:** \*P2, c6f, p2, c6b; rep from \* around.  
**Rnds 73-75:** As Rnd 70.  
**Rnd 76:** \*P2, k6, p2, c6b; rep from \* around.  
**Rnds 77-80:** Rep Rnds 73-76 once more.  
**Rnds 81-83:** As Rnd 70.  
**Rnd 84:** \*P2, c6f, p2, k6; rep from \* around.  
**Rnds 85-90:** Rep Rnds 81-84 once more.  
**Rnds 89-91:** As Rnd 70.  
**Rnd 92:** \*P2, c6f; rep from \* around.  
**Rnd 93:** As Rnd 70.  
**Rnd 94:** \*P2, [k1, p1] 3 times, p2, k6; rep from \* around.  
**Rnd 95:** \*P2, [p1, k1] 3 times, p2, k6; rep from \* around.  
**Rnds 96-103:** Rep [Rnds 14 and 15] 4 more times.  
**Rnd 104:** \*P2, [p1, k1] 3 times, p2, c6f; rep from \* around.  
**Rnds 105-107:** As Rnd 70.  
**Rnd 108:** \*P2, c6b, p2, k6; rep from \* around.  
**Rnds 109-111:** As Rnd 70.  
**Rnd 112:** \*P2, c6b, p2, k6; rep from \* around.  
**Rnds 113-114:** As Rnd 70.  
**Rnd 115 (Dec):** \*P2tog, k6; rep from \* around.  
**Rnd 116:** \*P1, c6b, p1, k6; rep from \* around.  
**Rnd 117:** \*P1, k6; rep from \* around.  
 Rep last rnd to the point in the pattern where you begin St st.

### **Cable Motif for Sleeves—See Chart 2**

(Worked over 16 sts)

**Rnds 1 and 3 (RS):** P1, k2, p2, k6, p2, k2, p1.

**Rnd 2:** P1, c2b, p2, k6, p2, c2b, p1.  
**Rnd 4:** P1, c2b, p2, c6f, p2, c2b, p1.  
**Rnds 5-12:** Rep Rnds 1-4 twice.  
**Rnd 13:** As Rnd 1.  
**Rnd 14:** P1, c2b, p2, [k1, p1] 3 times, p2, c2b, p1.  
**Rnd 15:** P1, k2, p2, [p1, k1] 3 times, p2, k2, p1.  
**Rnds 16-24:** [Rnds 14 and 15] 4 more times.  
**Rnd 24:** As Rnd 14.  
**Rnds 25 and 27:** As Rnd 1.  
**Rnd 26:** As Rnd 2.  
**Rnd 28:** P1, c2b, p2, c6b, p2, c2b, p1.  
**Rnds 29-36:** Rep Rnds 25-28 twice.  
**Rnd 37:** As Rnd 1.  
**Rnd 38:** As Rnd 2.  
Rep Rnds 1-38 for pattern.

### **SPECIAL TECHNIQUES**

**M1L (Make 1 Left):** Insert left-hand needle from front to back under the running thread between the last st worked and next st on LH needle; knit into the back of resulting loop.

**M1R (Make 1 Right):** Insert LH needle from back to front under the running thread between the last st worked and next st on LH needle. With RH needle, knit into the front of resulting loop.

**Wrap stitch:** Bring yarn to RS of work between needles, slip next st purlwise to right-hand needle, bring yarn around this st to WS, slip st back to left-hand needle, turn work to begin working back in the other direction.

**Hiding wraps:** On RS rows: pick up wrap from front to back and knit tog with wrapped st. On WS rows, pick up wrap from the back, then purl it tog with wrapped st.

**3-Needle Bind Off:** With RS tog and needles parallel, using a 3rd needle, knit together a st from the front needle with 1 from the back. \*Knit together a st from the front and back needles, and slip the first st over the 2nd to bind off. Rep from \* across, then fasten off last st.

### **Pattern Note**

When working back-and-forth in rows, maintain 1 st selvage at edge edge by slipping first st with yarn in front and knitting last st of every row, except for neck edges; work St st selvage at neck edges.

### **BODY**

Using middle-size circular needle, cast on 216 (234, 252, 270, 288, 306, 342) sts, pm for beg of rnd. Join for working in the rnd, being careful not to twist sts.

Work 2 rnds in Seed st.

Begin working Cable Motif patt starting Rnd 1, decreasing on the rnds indicated for your size.

Work even, repeating Rnd 117 until piece measures 19 3/4 (20, 20 1/4, 20 1/2, 20 3/4, 21, 21 1/4)" from cast-on.

Change to St st and work even until piece measures 20 3/4 (21, 21 1/4, 21 1/2, 21 3/4, 22, 22 1/4)" from cast-on, ending last rnd 4 (5, 5, 6, 6, 6) sts before beg of rnd marker.

### **Separate for Back and Front**

Removing markers, BO 8 (10, 10, 12, 12, 12, 12) sts for underarm, k76 (81, 88, 93, 100, 107, 121) sts for front, BO 8 (10, 10, 12, 12, 12, 12) sts for underarm, k76 (81, 88, 93, 100, 107, 121) sts for back. Put front sts on hold on spare needle or waste yarn. Beg working in rows.

## **BACK**

### **Armhole shaping**

**Next row (WS):** Purl.

BO 3 sts at beg of next 2 rows 0 (0, 0, 0, 1, 1, 1) times—76 (81, 88, 93, 94, 101, 115) sts.

BO 2 sts at beg of next 2 (4, 6, 6, 4, 6, 6) rows—72 (73, 76, 81, 86, 89, 103) sts.

**Dec row (RS):** Sl 1 wyif, ssk, knit to last 3 sts, k2tog, k1—70 (71, 74, 79, 84, 87, 101) sts.

Rep Dec row every RS row 1 (1, 2, 3, 3, 3, 5) times—68 (69, 70, 73, 78, 81, 91) sts.

Work even in **St st** until armhole measures 6 1/2 (6 3/4, 7, 7, 7 1/2, 7 1/2, 7 3/4)", ending with a WS row.

### **Short-Row Shoulder shaping**

**Short-row set 1:** With RS facing, knit to last 5 (5, 5, 5, 6, 7, 8) sts, wrap next st, turn; purl to last 5 (5, 5, 5, 6, 7, 8) sts, wrap next st, turn.

**Short-row set 2:** Knit to last 10 (10, 10, 12, 12, 14, 16) sts, wrap next st, turn; purl to last 10 (10, 10, 10, 12, 14, 16) sts, wrap next st, turn.

**Short-row set 3:** Knit to last 15 (15, 15, 18, 18, 21, 24) sts, wrap next st, turn; purl to last 15 (15, 15, 18, 18, 21, 24) sts, wrap next st, turn.

### **For sizes 42 (44 3/4, 47 1/2, 53)" only**

**Short-row set 4:** Knit to last 22 (22, 24, 26) sts, wrap next st, turn; purl to last 22 (22, 24, 26) sts, wrap next st, turn.

### **For all sizes**

**Next 2 rows:** Work to end of row, hiding wraps as you come to them.

Place 22 (22, 23, 25, 26, 29) sts on a holder for Right Shoulder; 24 (25, 26, 27, 28, 29, 33) sts on a 2nd holder for Back Neck; and 22 (22, 23, 25, 26, 29) sts on a 3rd holder for Left Shoulder.

## **FRONT**

Transfer 76 (81, 88, 93, 100, 107, 121) Front sts to needle and join yarn with WS facing.

Work armhole shaping as for Back, then work even in **St st** until armhole measures 2 1/4 (2 1/4, 2 1/2, 2 1/2, 2 1/2, 2 3/4, 2 3/4)", ending with a WS row—68 (69, 70, 73, 78, 81, 91) sts.

### **Neck and Shoulder shaping**

**Next row (RS):** K30 (30, 30, 31, 33, 34, 39) Left Front sts and place these on holder; bind off 8 (9, 10, 11, 12, 13, 13) front neck sts, k30 (30, 30, 31, 33, 34, 39) Right Front sts.

### **RIGHT FRONT NECK**

**Next row (WS):** Purl.

**Dec row (RS):** K1, ssk, knit to end of row—29 (29, 29, 30, 32, 33, 38) sts.

Rep Dec row every RS row 7 (7, 7, 7, 7, 7, 9) times—22 (22, 23, 25, 26, 29) sts.

Work even in **St st** until armhole measures 6 1/2 (6 3/4, 7, 7, 7 1/2, 7 1/2, 7 3/4)", ending with a WS row.

### **Right Shoulder shaping**

**Short-row set 1:** Knit to last 5 (5, 5, 5, 6, 7, 8) sts, wrap next st, turn; purl back.

**Short-row set 2:** Knit to last 10 (10, 10, 10, 12, 14, 16) sts, wrap next st, turn; purl back.

**Short-row set 3:** Knit to last 15 (15, 15, 18, 18, 21, 24) sts, wrap next st, turn; purl back.

### **For sizes 42 (44 3/4, 47 1/2, 53)" only**

**Short-row set 4:** Knit to last 22 (22, 24, 26) sts, wrap next st, turn; purl back.

**For all sizes**

**Next row:** Knit to end of row, hiding wraps as you come to them.

Place 22 (22, 23, 25, 26, 29) sts on a holder for Right Shoulder.

**LEFT FRONT NECK**

Transfer 30 (30, 30, 31, 33, 34, 39) Left Front sts to needle; with WS facing, join new yarn.

**Dec row (WS):** P1, p2tog, purl to end—29 (29, 29, 30, 32, 33, 38) sts.

Rep Dec row every WS row 7 (7, 7, 7, 7, 7, 9) rows—22 (22, 23, 25, 26, 29) sts.

Work even in **St st** until armhole measures 6 1/2 (6 3/4, 7, 7, 7 1/2, 7 1/2, 7 3/4)", ending with a RS row.

**Left Shoulder shaping**

**Short-row set 1 (WS):** Purl to last 5 (5, 5, 5, 6, 7, 8) sts, wrap next st, turn; knit back.

**Short-row set 2:** Purl to last 10 (10, 10, 10, 12, 14, 16) sts, wrap next st, turn; knit back.

**Short-row set 3:** Purl to last 15 (15, 15, 18, 18, 21, 24) sts, wrap next st, turn; knit back.

**For sizes 42 (44 3/4, 47 1/2, 53)" only**

**Short-row set 4:** Purl to last 22 (22, 24, 26) sts, wrap next st, turn; knit back.

**For all sizes**

**Next row:** Purl to end of row, hiding wraps as you come to them.

Place 22 (22, 23, 25, 26, 29) sts on a holder for Left Shoulder.

**SLEEVES**

Using dpns, cast on 46 (48, 50, 52, 54, 56, 60) sts, pm for beg of rnd. Join for working in the rnd, being careful not to twist sts.

Work 2 rnds in Seed st.

**Set-up rnd:** Remove marker, k1, pm, p1, k13 (14, 15, 16, 17, 18, 20), pm, work Rnd 1 of Cable Motif over next 16 sts, pm, k13 (14, 15, 16, 17, 18, 20), p1, k2.

**Next rnd:** Slipping markers as you come to them, p1, knit to marker, work established Cable Motif, knit to last 3 sts, p1, c2b.

Work even in established patts, working c2b on last 2 sts every other rnd until piece measures 2 1/2" from cast-on.

**Inc rnd:** P1, M1R, work in patt to last 3 sts, M1L, p1, work last 2 sts in patt—48 (50, 52, 54, 56, 58, 62) sts.

Cont in established patt and rep Inc rnd every 4th rnd 1 (1, 1, 1, 1, 6, 8) more times, then every 6th rnd 0 (0, 0, 3, 7, 10, 9) times, every 8th rnd 3 (9, 9, 7, 4, 0, 0) times and every 10th rnd 4 (0, 0, 0, 0, 0, 0) times—64 (70, 72, 76, 80, 90, 96) sts.

Work even until piece measures 17 1/2 (18, 18, 18 1/4, 18 1/4, 18 1/4, 18 1/2)" from cast-on, ending last rnd 5 (6, 6, 7, 7, 7, 7) sts before marker.

**Next rnd:** Removing marker, BO next 8 (10, 10, 12, 12, 12, 12) sts, work to end of rnd—56 (60, 62, 64, 68, 78, 84) sts.

**Sleeve cap shaping**

Beg working in rows.

BO 3 sts at beg of next 2 rows 0 (0, 0, 0, 1, 1, 1) times—56 (60, 62, 64, 62, 72, 78) sts.

BO 2 sts at beg of next 2 (4, 6, 6, 4, 6, 6) rows—52 (52, 50, 52, 54, 60, 66) sts.

**Dec row (RS):** Sl 1 wyif, ssk, knit to last 3 sts, k2tog, k1—50 (50, 48, 50, 52, 58, 64) sts.

Rep Dec row every RS row 1 (1, 2, 3, 3, 3, 3) times—48 (48, 44, 44, 46, 52, 58) sts.

BO 2 sts at beg of next 2 rows 3 (3, 0, 0, 1, 0, 0) times—36 (36, 44, 44, 42, 52, 58) sts.

Rep Dec row every RS row 6 (9, 8, 8, 12, 7, 4) times—24 (18, 28, 28, 18, 38, 50) sts.

BO 2 sts at beg of next 2 rows 4 (2, 3, 3, 0, 5, 8) times—8 (10, 16, 16, 18, 18, 18) sts.  
BO 3 sts at beg of next 2 rows 0 (0, 1, 1, 2, 2, 2) times—8 (10, 10, 10, 6, 6, 6) sts.  
BO rem stitches.

## **FINISHING**

Weave in loose ends.

Block all pieces to measurements.

With RS tog, join shoulders using 3-Needle Bind off.

## **Cowl Collar**

With smallest circular needle and WS facing, join new yarn at left shoulder.

K24 (25, 26, 27, 28, 29, 33) sts from holder for Back neck; pick up and knit 28 (29, 30, 29, 32, 31, 33) sts along right Front Neck; 8 (9, 10, 11, 12, 13, 13) sts along front BO; 28 (29, 30, 29, 32, 31, 33) sts along left Front Neck—88 (92, 96, 96, 104, 104, 112) sts. Pm and join for working in the round.

Knit for 2".

Change to largest circular needle and continue working in St st for 1" more.

**Inc rnd:** \*K3, k1f&b; rep from \* around—110 (115, 120, 120, 130, 130, 140) sts.

Beg first Seed stitch ridge.

Work 3 rnds in Seed st.

**Inc rnd:** \*K4, k1f&b; rep from \* around—132 (138, 144, 144, 156, 156, 168) sts.

Knit 5 rnds.

Change to largest circular needle and knit 7 rnds.

Work 3 rnds in Seed st.

**Inc rnd:** \*K5, k1f&b; rep from \* around—154 (161, 168, 168, 182, 182, 196) sts.

Knit 7 rnds.

BO all sts.

## **Cable trim for collar**

Using provisional method and dpns, CO 16 sts; do not join.

**Row 1 (RS):** Sl 1 pwise wyif, k2, p2, k6, p2, k3.

**Row 2:** Sl 1 pwise wyif, p2, k2, p6, k2, p2, k1.

**Row 3:** As Row 1.

**Row 4:** Sl 1 pwise wyif, k2, p2, c6f, p2, k3.

**Rows 5-12:** Rep Rows 1-4 twice.

**Row 13:** As Row 1.

**Row 14:** As Row 2.

**Rows 15-22:** Rep [Rows 13 and 14] 4 more times.

Rep Rows 1-22 as many times as needed for trim length equal collar circumference at BO.

Leave sts on needle.

Block the resulting strip. Undo provisional cast-on and transfer sts to another dpn.

With RS tog fold strip so that needles at both ends are parallel, making sure that strip is not twisted. Join sts using 3-Needle Bind off.

Weave in loose ends.

Block seam.

Sew trim to collar.

Sew in sleeves, easing in as necessary.

Weave in loose ends. Block all seams.

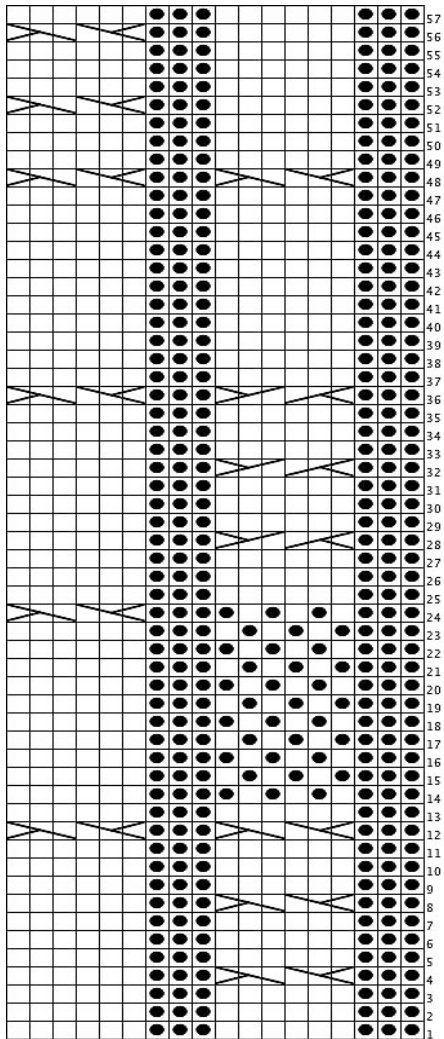
## **ABBREVIATIONS**

**BO-** bind off

**beg** – begin(ning)

**c2b**- skip first st, knit second st through the back loop, then knit first st  
**c6f**- place next 3 sts on cable needle (cn), hold in front, k3, knit sts from cn  
**c6b**- place next 3 sts on cn, hold in back, k3, knit sts from cn  
**CO**- cast on  
**cont** – continue(s)(ing)  
**dec** – decrease/decreases/decreasing  
**inc** – increase/increases/increasing  
**k** – knit  
**k1b&f** – knit in front and back of st  
**p** – purl  
**pm** – place marker  
**p2tog** – purl 2 sts together  
**rep** – repeat  
**RS** – right side  
**rnd** – round  
**St st** – stockinette st  
**st** - stitch  
**WS** – wrong side

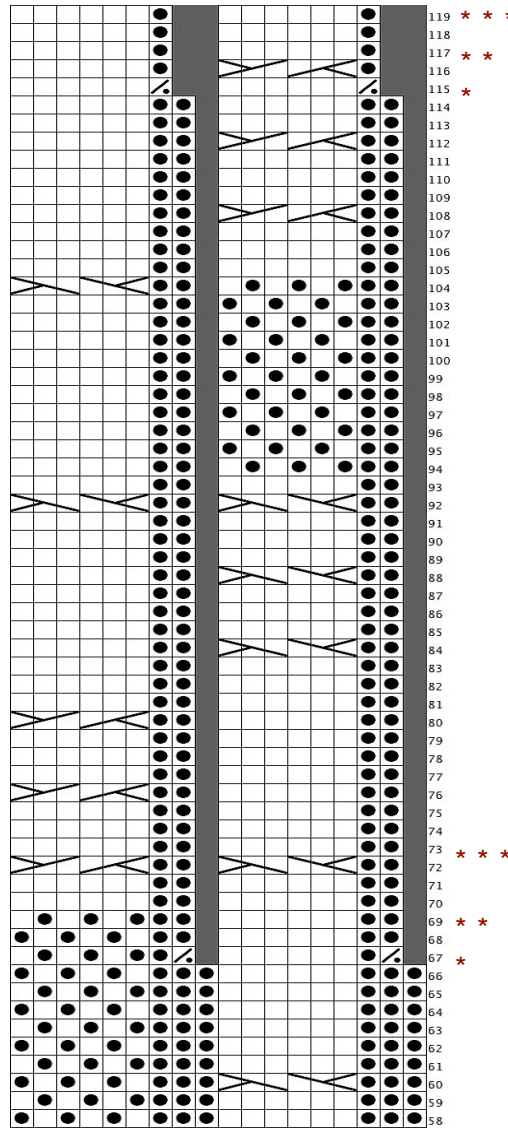
# La Bella Tunica Charts



18-st rep, decreasing to 14-st rep

**CHART 1**

CABLE PATTERN FOR BODY RND 1-57



18-st rep, decreasing to 14-st rep

**CHART 1**

CABLE PATTERN FOR BODY RND 58-119

**STITCH AND DECREASE KEY**

□ K on RS, P on WS

● P on RS, K on WS

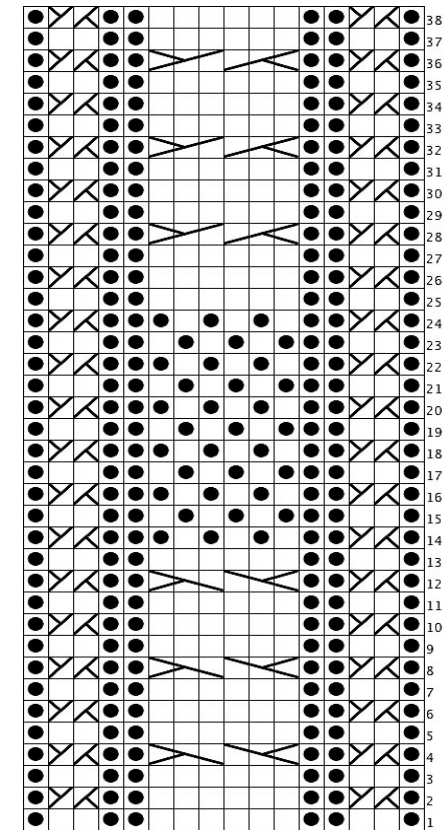
⊗ c2b

⊗⊗ c6b

⊗⊗⊗ c6f

P2tog between cables for sizes:

- \* 33 1/2, 36 1/4, 39
- \*\* 42, 44 3/4
- \*\*\* 47 1/2, 53



16-st panel

**CHART 2**

CABLE MOTIF FOR SLEEVES

