



W123

# Cascade Classic

Using

Cascade Indulgence Yarn



Indulgence blend of  
Super fine Alpaca & Angora

## CASCADE CLASSIC

**Finished Measurements:** Bust 36 (40, 44, 48) inches, length 25 (27, 27 ½, 27 ½) inches  
armhole depth 9 (9 ½, 10 ½, 10 ¾) inches.

**Materials:** Cascade Yarns Indulgence 1250 (1450, 1650, 1750) yds. [5 (6, 7, 8) hanks]  
#5 & #7 needles, #7, 16" circular needle, stitch holders

**Gauge:** 20 sts & 26 rows = 4" on the larger needle in st. st.

**Back:** With #5 needles cast on 81 (89, 101, 109) sts. Row 1 (ws); \* p2, k2; repeat from \* ending with p1. Row 2 (rs); k1tbl, \*p2, k2tbl; repeat from \*. Work these 2 rows for 2 (3, 3, 3) inches. Increase 10 (12, 10, 10) sts. evenly spaces on the last ws row, 91 (101, 111, 119) sts. Change to larger needle and k 12 (17, 22, 26) sts, work row 1 of chart A over next st, k12, p4, k16, work row 1 from chart B over next st, k16, p4, k12, work row 1 from chart A over next st, k12 (17, 22, 26)sts. Next row (ws); work row 2 from charts A & B and rem sts as they present themselves. Row 3; k11 (16, 21, 25) sts, work row 3 from chart A over 3 sts, k11, p4, k15, work row 3 from chart B over 3 sts., k15, p4, k11, work row 3 from chart A over 3 sts, k11 (16, 21, 25) sts. Row 4; work row 4 from charts A & B and rem sts as they present themselves. Row 5; k10 (15, 20, 24)sts, work row 5 from chart A over 5 sts, k10, p4, k14, work row 5 from chart B over 5 sts, k14, p4, k10, work row 5 from chart A over 5 sts, k10 (15, 20, 24) sts. Work in this manner dec knit sts. as patterns expand every other row and inc knit sts as patterns decrease.

Pattern sequence: repeat row from chart A 4 times for the first and last patterns; alternate charts B with A, 2 times for center pattern; continue 4 st rstst panel until row 36 of 2nd repeat of chart B. After completing pattern repeats, work in stst.

Raglan shaping: When piece measures 16 (17 ½, 17, 16 ¾) inches Bind off 3 (5, 5, 8) sts at beg of next 2 rows 85 (91, 101, 103) sts. Next rs row; k2, sl 1, k1, pssso, knit until last 4 sts, k2tog, k2. Dec in the manner until every other row 29 (31, 34, 35) times. Slip rem 27 (29, 33, 33) back neck sts to holder.

**Front:** Work same as back until 43 (45, 47, 49)sts. Shape neck on next rs row; k2, sl 1, k1, pssso, k12. Slip to holder center 11 (13, 15, 17) sts, k12, k2tog, k2. Right front; purl next row/ k2, sl 1, k1, pssso, knit to last 4 sts, k2tog, k2. Repeat every other row until 2 sts. rem. K2tog. Fasten last st.

**Sleeves:** With smaller needles cast on 42 (46, 46, 50) sts. Work in rib as for back & front for 2 (3, 3, 3) inches. Inc. 7 (7, 9, 9) sts evenly spaced on least ws row, 49 (53, 55, 59) sts. Change to larger needles and k8 (10, 11, 13) sts, p4, k12, work row 2 of chart ! over next st, k12, p4, k8 (10, 11, 13) sts (pattern set) Work in this manner repeating Chart A 3 times and 4 st rstst panel until row 1 of 3rd repeat of chart. After completing patterns work in stst. At the same time inc 1 st each end of every 4th row 0 (0, 0, 2) times, every 6th row 0 (3, 11, 15) times and every 8th row 12 (10, 4, 0) times. 73 (79, 85, 93) sts. Work even until sleeve measures 18 (19, 19, 19) inches or desired length, end with a ws row. Raglan shaping: bo 3 (5, 5, 8) sts at beg of next 2 rows. K2, sl 1, pssso, knit to last 4 sts, k2tog, k2. Dec in this manner every other row 29 (31, 34, 35) times. Slip rem 90 (7, 7, 7) sts on a holder.

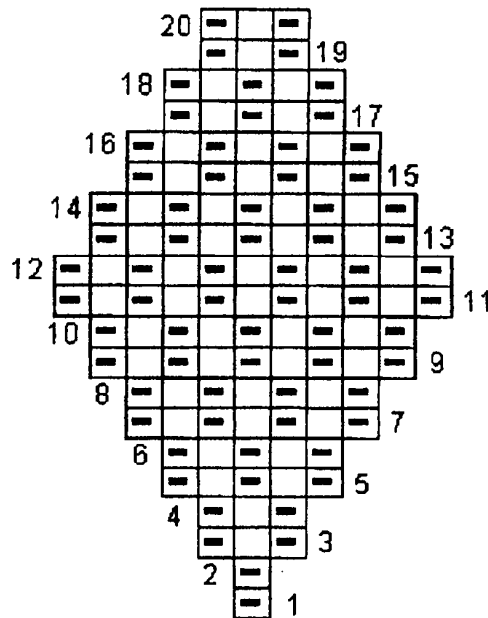
**Assemble:** Sew sleeves to back and front pieces.

**Collar** With circular needle or double pointed needles knit 27 (29, 33, 33) back neck sts, 9 (7, 7, 7) left sleeve sts, pick up 12 (12, 11, 12) sts left front, knit 11 (13, 15, 17) sts from front neck, pick up 12 (12, 11, 12) sts from right front, knit 9 (7, 7, 7) right sleeve sts, 80 (80, 84, 88) sts. Place a marker and \* K 2 tbl, P 2; repeat from \* until collar measures 4 inches. With yarn in back, sl next st; bring yarn forward and return st to left needle. Work rem of collar from the WS; \* K 2 tbl, P 2; repeat from \*, for 4 inches more. BO loosely. Fold.

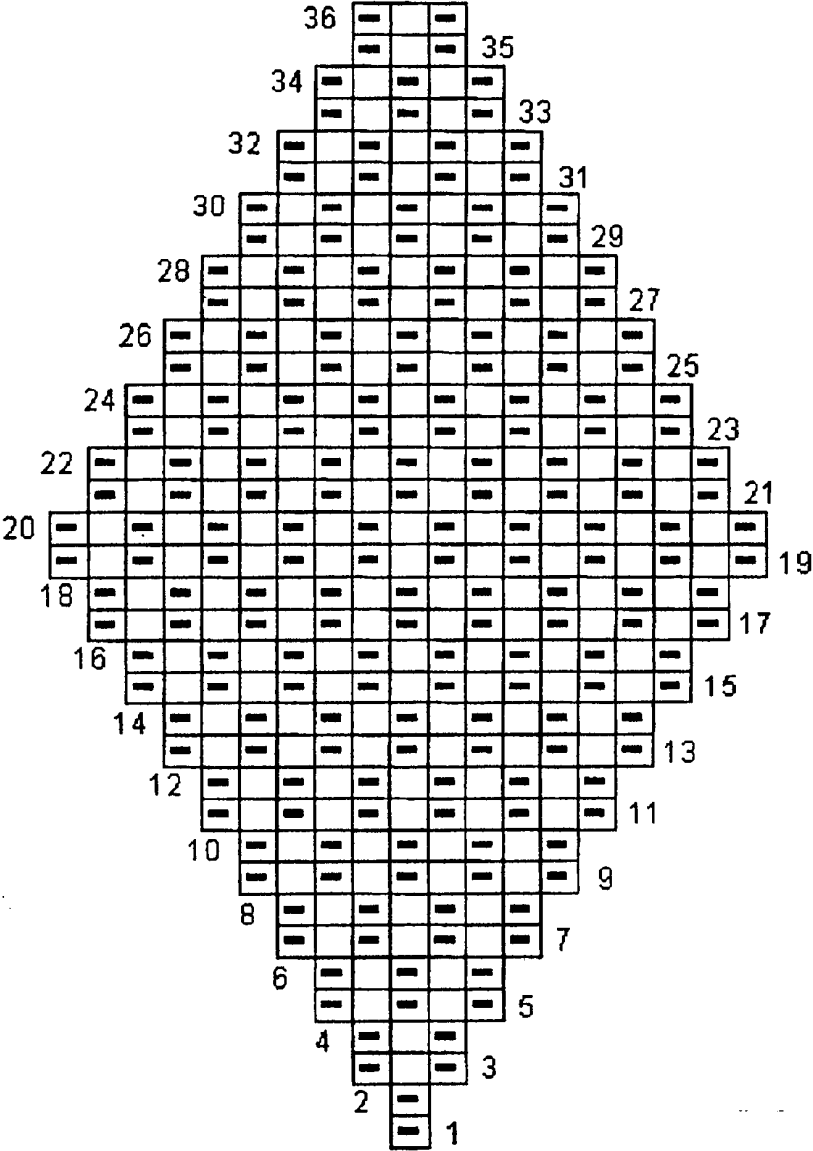
**Finishing** Sew side and sleeve seams. Block lightly to open RSTST panel and obtain desired measurement.

<b>Glossary</b>	beg	begin(ning)	PSSO	pass slipped stitch over
	BO	bind off	RS	right side
	CO	cast on	RSTST	reverse stockinette stitch
	Dec	decrease	rem	remaining
	Est	established	sl	slip
	Inc	increase	st(s)	stitch(es)
	K	knit	STST	stockinette stitch
	K 2 tog	K 2 together	tbl	through the back loop
	P	purl	WS	wrong side

**Chart A**



### Chart B



Designed by Karen Connor Designs™  
568 Stratford Ave., St. Louis, MO 63130  
phone 314.862.5672, fax 314.862.6635e-mail [yankee6@primary.net](mailto:yankee6@primary.net)  
February 21, 2001