



**Cascade Green Indulgence (W131)
Using Cascade Indulgence Pattern**



Cascade Green Indulgence (W131)

Finished measurements: Bust 36 (40, 44, 48) inches; length 24 (26, 26, 26) inches; armhole depth 9 ½ (9 ½, 10, 10) inches, sleeve length 17 (18, 18, 18 ½) inches.

Materials: 1299 (1476, 1594, 1697) yds Cascade Yarns' Indulgence (sample in color 512)
#5 and #7 needles, or size to obtain gauge
Cable needle
Stitch holders
7, ½" plastic rings (optional)
Crochet hook (optional)
Or 7 buttons

Gauge: 5 sts and 7 rows = 1 inch on larger needles and pattern from chart B.

Back: With larger needles CO 107 (117, 127, 137) sts. Row 1 (WS): * K 2 (2, 3, 3), P 2, (3, 3, 3), K 2 (2, 2, 3), P 3, K 2 (2, 2, 3), P 2 (3, 3, 3), K 2 (2, 3, 3), work row 7 from chart A over 8 sts; repeat from * 3 times more ending K 2 (2, 3, 3), P 2 (3, 3, 3), K 2 (2, 2, 3), P 3, K 2 (2, 2, 3), P 2 (3, 3, 3), K 2 (2, 3, 3). Row 2 (RS): * P 2 (2, 3, 3), K 2 (3, 3, 3), P 2 (2, 2, 3), K 3, P 2 (2, 2, 3), K 2 (3, 3, 3), P 2 (2, 3, 3), work row 8 from chart A over 8 sts; repeat from * ending P 2 (2, 3, 3), K 2 (3, 3, 3), P 2 (2, 2, 3), K 3, P 2 (2, 2, 3), K 2 (3, 3, 3), P 2 (2, 3, 3). Continue in this manner working rows from chart A as est and rem sts as they present themselves until 18 rows of ribbing are completed, end RS on row 24 of chart. Next row (WS): * work row 1 of chart B over 15 (17, 19, 21) sts and row 1 from chart A over 8 sts; repeat from * ending 15 (17, 19, 21) sts from row 1 of chart B. Continue in this manner working rows from charts A and B until piece measures 22 ½ (24 ½, 24 ½, 24 ½) inches or desired length, end WS. Shape neck on next RS row: pattern over 39 (43, 46, 51) sts, BO center 29 (31, 35, 35) sts, pattern over 39 (43, 46, 51) sts. Working each side separately, dec 1 st at neck edge every other row 3 times. Last row dec 2 sts in cable pattern. Slip rem 34 (38, 41, 46) sts to holder.

Right Front: With larger needles CO 53 (58, 63, 67) sts. Row 1 (WS): * K 2 (2, 3, 3), work row 7 from chart A over 8 sts, K 2 (2, 3, 3), P 2 (3, 3, 3), K 2 (2, 2, 3), P 3, K 2 (2, 2, 3), P 2 (3, 3, 3); repeat from * ending K 2 (2, 3, 3), P 2 (3, 3, 3), K 3. Row 2 (RS): P 3, K 2 (3, 3, 3), P 2 (2, 3, 3), * K 2 (3, 3, 3), P 2 (2, 2, 3), K 3, P 2 (2, 2, 3), K 2 (3, 3, 3), P 2 (2, 3, 3), work row 8 from chart A, P 2 (2, 3, 3); repeat from *. Continue in this manner working rows from chart A as est and rem sts as they present themselves until 18 rows of ribbing are completed, end RS on row 24 of chart. Next row (WS): K 2 (2, 3, 3), * work row 1 from chart A over 8 sts and row 1 of chart B over 15 (17, 19, 21) sts; repeat from * ending P 2 (3, 3, 3), K 3. Continue in this matter working rows from charts A and B until piece measures 21 (23, 23, 23) inches, end WS. Shape neck on next RS row: BO 6 (7, 9, 8) sts, complete row. Dec 1 st at neck edge every RS row 9 times. Work even until front measures same as back. Last row, dec 2 sts in each cable pattern. Slip rem 34 (38, 41, 46) sts to holder.

Left Front: With larger needle CO 53 (58, 63, 67) sts. Row 1 (WS): K 3, P 2 (3, 3, 3), K 2 (2, 3, 3), * P 2 (3, 3, 3), K 2 (2, 2, 3), P 3, K 2 (2, 2, 3), P 2 (3, 3, 3), K 2 (2, 3, 3), work row 7 from chart A over 8 sts; repeat from * ending K 2 (2, 3, 3). Work rib same as for left front until 18 rows completed. Next row (WS): K 3, P 2 (3, 3, 3), * work row 1 from chart B over 15 (17, 19, 21) sts and row 1 from chart A over 8 sts; repeat from * ending K 2 (2, 3, 3). Work remainder same as for left front reversing all shaping.

Sleeve: With larger needles CO 48 (52, 56, 60) sts. Row 1 (WS): K 3 (2, 2, 2), P 2 (3, 3, 3), K 2 (2, 3, 3), P 2 (3, 3, 3), K 2 (2, 2, 3), P 3, K 2 (2, 2, 3), P 2 (3, 3, 3), K 2 (2, 3, 3), work row 7 from chart A over 8 sts, K 2 (2, 3, 3), P 2 (3, 3, 3), K 2 (2, 2, 3), P 3, K 2 (2, 2, 3), P 2 (3, 3, 3), K 2 (2, 3, 3), P 2 (3, 3, 3), K 3 (2, 2, 2). Row 2 (RS): work row 8 of chart A and rem sts as they present themselves. Continue in this manner until 18 rows of ribbing are completed, end RS. Next row inc 3 sts in next 5 sts, work row 1 from chart B over 15 (17, 19, 21) sts, row 1 from chart A over 8 sts, row 1 from chart B over 15 (17, 19, 21) sts, inc 3 sts in next 5 sts, 54 (58, 62, 66) sts. Next row: K 8, work row 2 from chart B, row 2 from chart A, row 2 from chart B, K 8 sts. Continue in this manner working patterns from charts as est and at the same time inc 1 st each end of every 4th row 23 (24, 25, 23) times, 100 (106, 112, 112) sts, incorporating new sts into pattern sequence as able. Work even until sleeve measures 17 (18, 18 ½) inches or desired length, end WS. BO 44 (47, 50, 50) sts, pattern across center 12 sts slipping them to holder, BO 44 (47, 49, 49) sts.

Shoulder: Slip right front and back shoulder sts to smaller needles so that points face sleeve. Slip 12 sleeve sts to larger needle. With WS of sleeve facing and with yarn in back, slip 1 st from back shoulder to larger needle held in left hand. Bring yarn forward and slip st again to larger needle held in right hand. Work in pattern across 12 sts. Turn. Slip 1 st from right front to larger needle bringing yarn forward. Slip st again to larger needle and work 11 sts in pattern, P tog last 2 sts. Turn. With yarn in back slip next st from back shoulder to left needle. Bring yarn forward and slip st to right needle. Pattern across 11 sts, K 2 tog. Continue in this manner across all shoulder sts. Slip 12 rem sts to holder. Repeat for left side.

Neck Band: With smaller needles beg at right neck edge pick up and knit about 92 (97, 102, 102) sts including sts from holders (multiples of 5 plus 2). Row 1 (WS): * K 2, P 3; repeat from * ending K 2. Work in rib pattern for one inch. BO loosely in pattern.

Button Band: With smaller needles beg at left neck pick up about 122 (132, 132, 132) sts (multiples of 5 plus 2). Work in rib pattern same as for neck band for one inch. BO loosely in pattern. Mark for even placement of 7 buttons.

Buttonhole Band: Work same as for button band adding 2 st buttonholes to correspond with button placement in rows 4 and 5.




Finishing: Measure down from shoulder on front and back pieces 9 ½ (9 ½, 10, 10) inches. Pin sleeve in place and sew. Sew side and sleeve seams. Block to size.

Optional covered buttons: Make a slip knot leaving a 4 inch tail. Single crochet through plastic ring covering ring tightly. Knot tail to working yarn. Break yarn leaving a 10-12 inch tail. Thread this tail onto a tapestry needle and sew overcast st into each single crochet, pulling sts inward. Knot the two tails. Sew an **X** across back of button and use the tails to secure button in place.

Glossary:	beg	begin(ning)	K	knit
	BO	bind off	P	purl
	CN	cable needle	rem	remaining
	CO	cast on	RS	right side
	dec	decrease	st(s)	stitch(es)
	est	established	tog	together
	inc	increase	WS	wrong side

Chart A

Key

-  Knit on the RS, purl on the WS
-  Slip 2 sts to CN in front, K 4 sts, K 2 from CN
-  Slip 2 sts to CN in front, K 6 sts, K 2 from CN

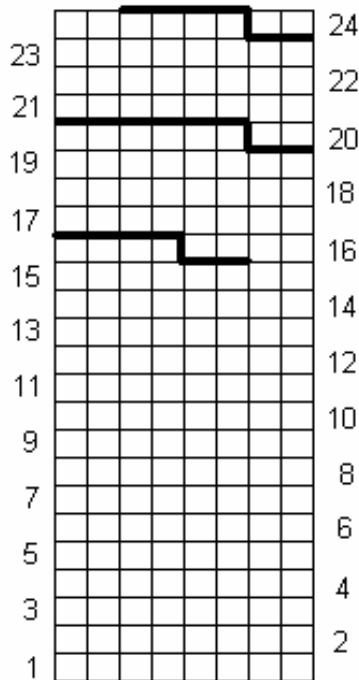
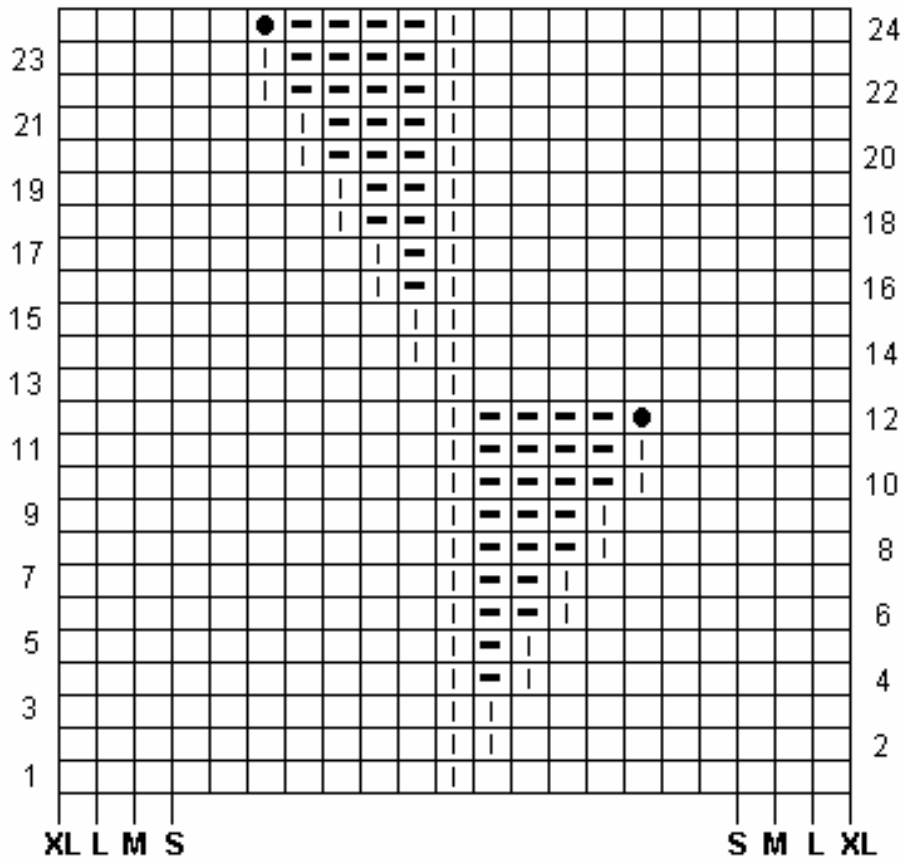


Chart B

- Key**
- Purl on RS, knit on WS
 - | Knit on RS, purl on WS
 - Purl on RS, knit on WS
 - || K into back loop of 2nd st on left needle, K in front of first st
 - | Knit into 2nd st on left needle, purl first st
 - | - Purl into back of 2nd st on left needle, knit first st
 - K, P, K, P, K into st. Slip 2nd, 3rd, 4th and 5th sts over first



Designed exclusively for Cascade Yarns by:
Karen Connor Designs™
 568 Stratford Ave., St. Louis, MO 63130
 Fax 314-862-6635
yankee6@accessus.net

Graphics courtesy of Carole Wulster's "Stitch & Motif Maker" software