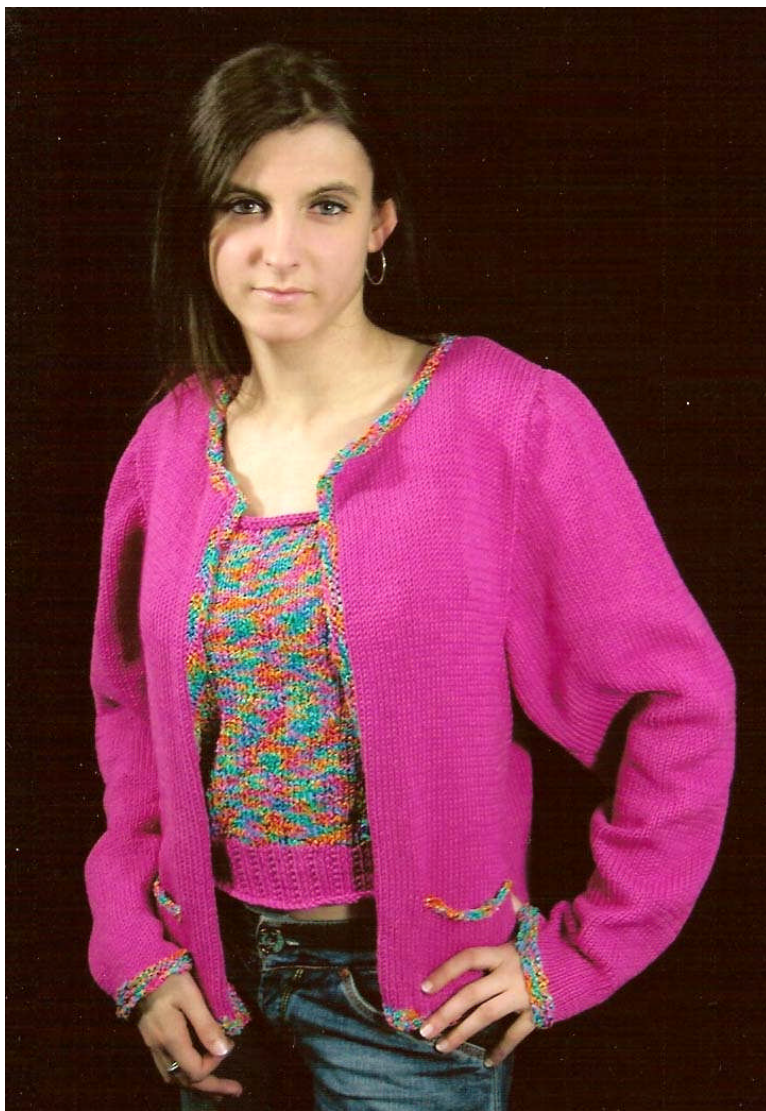




**All Season Sweater Set (W163)
Using Cascade Sierra/Alma Pattern**



All Seasons Sweater Set (W163)

Sierra 5,5,6,6,7 balls
52"

Finished bust 37", 40", 43", 46", 49",

Alma 2 balls all sizes
22"

Finished length 21", 21", 21", 22", 22",

Gauge: 5 st = 1" in st st using Sierra and Size #7 needles

BACK:

Using Alma cast on 92, 100, 108, 116, 124, 132 sts and knit 4 rows. Change to st st and continue until piece measures 12", 12", 12", 13", 13", 13".

Armholes:

Bind off 5 sts at the beginning of the next 2 rows, then 3 sts at the beginning of the next 2 rows for all sizes. Decrease 1 st each edge every row 4 times, then decrease 1 st every other row 0,0,0,1,2,3 times. Continue in st st for 10" above armhole. Bind off all sts.

POCKETS: (make 2)

Using Sierra cast on 20 sts and work st st for 4" and place on holder for later.

LEFT FRONT:

Using Alma, cast on 46, 50, 54, 58, 62, 66 sts and knit 4 rows. Change to Sierra and work in st st for 4". With knit (right) side facing, knit 16,20,24,23,27,31 sts, place next 20 on a holder, knit the 20 pocket sts then the rest of the row. Continue in st st until front measures 12",12",12",13",13",13". With right side facing, bind off 5 sts (armhole edge) and knit to end of row. On next right side row at armhole edge bind off 3 sts, then dec 1 st at armhole edge 0,0,0,1,2,3 times. When piece measures 7" above armhole bind off and beginning one purl (wrong side row) bind off 2 sts 1 time, then 5 sts one time, then 2 sts 1 time, and 1 st 7 times. When front measures the same as the back, bind off.

RIGHT FRONT:

Work as the left front for 4" Knit 10,10,10,15,15,15 sts, place next 20 sts on holder, knit 20 pocket sts, knit to the end of row. Continue until front measures 12", 12",12",13", 13", 13". With the right side facing, bind off 8 sts 1 time, 5 sts one time, 2 sts one time, and 1 st 7 times. When front measures the same as the back, bind off.

SLEEVES: (make 2)

Using Alma, cast on 40,40,40,42,42,42 sts and knit 4 rows. Change to Sierra and st st and increase 1 st at each edge on the 5th row and every following 4th row to 100 sts for all sizes. At 17",17",17",18",18",18" bind off 5 sts at the beginning of the next 2 rows. Decrease 1 st at each edge on the next and every row 5 times, decrease 1 st at each edge every other row to 30 sts. Bind off 5 sts at the beginning of each row until all bound off.

FINISHING:

Sew side and shoulder seams. Set in sleeves. Using Alma, pick up and knit 90,90,90,95,95,95 sts around the neck and knit 3 rows then bind off. Pick up and knit 76,76,82,82,82 sts on left front edge, knit 3 rows and bind off. Repeat for right edge.

Sew pockets.

Pick up the 20 sts on holders and knit 2 rows and bind off. Sew in all ends.