



W177

Cascade Cash Vero Bourne Lace Gansey



Designed by Diane Zangl

Bourne Lace Gansey

Designed by Diane Zangl

This gansey-inspired pullover features openwork and coin cables side by side with a small texture pattern. A placket is used for closure at the left shoulder and it continues through the stand-up collar.

Skill Level

Intermediate

Size

Woman's small (medium, large, extra-large) Instructions are given for smallest size, with larger sizes in parentheses. When only 1 number is given, it applies to all sizes. Model shown in size medium.

Finished Measurements

Chest: 36 (40, 44, 48)"

Armhole depth: 7 1/2, (8, 8 1/2, 9)"

Side to underarm: 12 (13, 14, 14)"

Sleeve length: 18 (18 1/2, 18 1/2, 19)"

Materials

- Cascade Yarns *Cash Vero*, 55% Merino, 33% microfier acrylic, 12% cashmere (50g/98 yds per ball): 12 (13, 14, 16) balls #16 light green
- Size 5 (3.75mm) needles **or size needed to obtain gauge**
- Cable needle (cn)
- Stitch markers and holders
- 5 (5, 6, 6) Buttons

Gauge

20 sts and 27 rows = 4" in body pat

To save time, take time to check gauge.

Special Abbreviations & Techniques

BC (Back Cross): Sl 2 sts to cn and hold in back, k2, k2 from cn.

FC (Front Cross): Sl 2 sts to cn and hold in front, k2, k2 from cn.

Wyif: With yarn in front.

Buttonhole (worked on first cable only of band/collar): K2, k2tog, (yo) twice, ssk, k2.

On WS row work p1, p1 through back, in double yo.

Small Coin Rib

Row 1 and 3 (WS): K1, *p8, k1; rep from * across row.

Row 2: P1, *BC, FC, p1; rep from * across row.

Row 4: P1, *FC, BC, p1; rep from * across row.

Rep Rows 1 –4 for pat.

BACK

Cast on 91 (100, 109, 118) sts. Work even in Small Coin Rib for 16 rows. Purl 1 row, inc (dec, dec, inc)

0 (1, 2, 5) sts evenly –91 (99, 107, 123) sts.

Referring to chart, work even in Texture pat until back measures 10 3/4 (11 1/2, 12 1/2, 12 1/2)", ending

with a WS row.

Bind off 3 (5, 7, 7) sts at beg of next 2 rows. Dec 1 st each end every RS row 3 (4, 4, 5) times – 79 (81,

85, 99) sts.

Beg with a WS row, knit 5 rows.

Set up yoke pat

Sizes S, M, and L only: K0 (1, 3), work Row 1 of Yoke Chart from A to B twice, B to C once, C to D

twice, k0 (1, 3).

Size XL only: Work Row 1 of Yoke Chart from * to B once, A to B twice, B to C once, C to D twice, C to * once.

All sizes: Work even in established chart pats until armhole measures 7 1/2 (8, 8 1/2, 9)" above

bound-off underarm sts, ending with a WS row.

Shape back neck and shoulders

Place markers 26 (26, 27, 32) sts in from each end. Center 27 (29, 31, 35) sts will mark back neck.

Work in established pats to first marker, join second ball of yarn and bind off center marked sts, work to end of row.

Working on both sides of neck with separate balls of yarn, dec 1 st at each neck edge every row 3

times –23 (23, 24, 29) sts on each side of neck.

On right shoulder, bind off at arm edge 8 (8, 8, 10) sts twice, then 7 (7, 8, 9) sts once **at the same**

time on left shoulder work even in garter st for 6 rows to form button band.

Bind off all sts.

FRONT

Work as for back until armhole measures 4 1/2 (5, 5, 5 1/2)" above bound-off underarm sts, ending with a RS row.

Shape front neck

Place markers 27 (27, 28, 33) sts in from each end. Center 25 (27, 29, 33) sts will mark front neck.

Work in established pats to first marker, join second ball of yarn and bind off center marked sts, work to end of row.

Working on both sides of neck with separate balls of yarn, dec 1 st at each neck edge every RS row 4

times –23 (23, 24, 29) sts on each side of neck.

Work even until armhole measures same as for back above bound-off underarm sts. **Shape shoulders**

Place sts of left shoulder on holder. On right shoulder, bind off at arm edge 8 (8, 8, 10) sts twice, then

7 (7, 8, 9) sts once.

Buttonhole band

Sl sts of left shoulder to LH needle. Cast on 10 sts to same needle.

Next row (RS): *Sl 1, work 8 sts of Buttonhole Band chart, p2tog, sl 1 purlwise wyif, turn, k2tog, p8,

k1. Rep from * until all shoulder sts have been worked and making buttonhole on Row 3 of pat, ending

with a WS row. **Do not** cut yarn, sl sts to holder.

SLEEVES

Cast on 55 (55, 64, 64) sts. Work even in Small Coin Rib for 20 rows. Purl 1 row, inc 0 (0, 1, 1) st on last row –55 (55, 65, 65) sts

Set up sleeve pat

Next row (RS): K1 (1, 6, 6), work Row 1 of Texture pat over next 11 sts, place marker, work Row 1 of Yoke Chart from * to * over next 31 sts, place marker, work row 1 of Texture pat over 11 sts, k1 (1, 6, 6).

Keeping sts between markers in Cable and Openwork pats, and rem sts in Texture pat, inc 1 st each end every 8th (6th, 8th, 8th) row 10 (13, 10, 13) times, working added sts into Texture pat –75 (81, 85, 91) sts.

Work even until sleeve measures 18 (18 1/2, 18 1/2, 19)'' from beg, ending with a WS row.

Shape sleeve cap

Mark each end st for underarm. Work even for 4 (6, 8, 8) rows more.

Dec 1 st each end every RS row 3 (4, 4, 5) times. Bind off rem 69 (73, 77, 81) sts.

COLLAR

Sew right shoulder seam. Sl buttonhole band sts from holder to LH needle.

Using dropped yarn, work across 10 sts of band, pick up and knit 14 (14, 20, 20) sts along left neck edge, 22 (26, 29, 29) sts across front neck, 18 (18, 24, 24) sts along right neck edge, 23 (28, 31, 31) sts across back neck, and 4 sts along rem left neck –91 (100, 118, 118) sts.

Next row (WS): Sl 1, *p8, k1; rep from * across.

Beg with next row of pat sequence, work even in cable pat of Buttonhole Band chart, until collar measures approximately 2'', **at the same time** making buttonholes on Row 3 of **first cable only** as previously established, ending with Row 6 of chart.

Bind off all sts loosely.

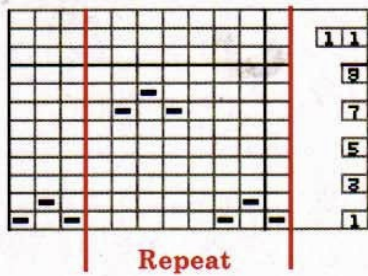
ASSEMBLY

Lap buttonhole band over button band and pin in place.

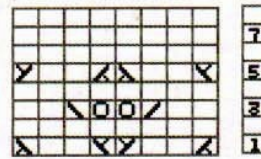
Sew sleeves into armholes, matching underarm markers to first bound-off st of body and sewing through both layers of bands at left shoulder.

Sew side and sleeve seams.

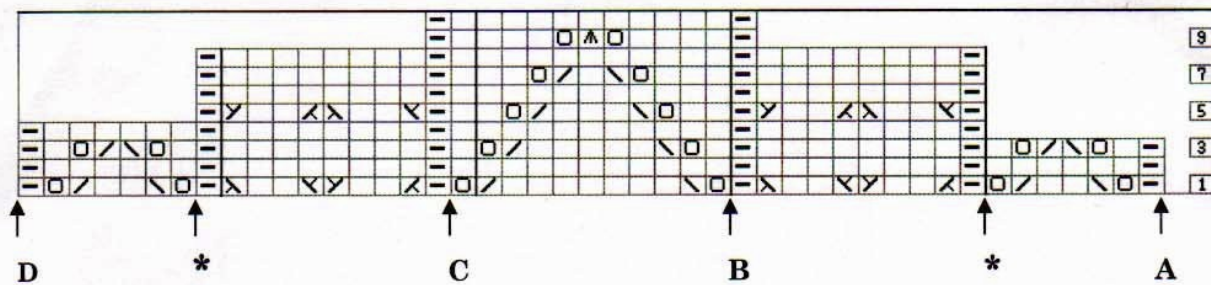
Sew on buttons



Texture Pat for Body and Sleeves



Buttonhole Band Chart



Yoke Chart

Stitch Key

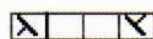
□ K on RS, p on WS

▢ P on RS, k on WS

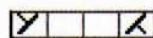
◻ Yo

K2tog

▤ Ssk



Sl 2 to cn and hold in front. k2. k2 from cn.



Sl 2 to cn and hold in back. k2. k2 from cn.



Slip 2 sts as if to k2tog, k1, pass 2 slipped sts over k st. Center st will lie on top.

