

W199

CASCADE YARNS
DISTRIBUTOR OF FINE YARN

*Year Round Cardigan
In Cascade Cash Vero DK*



Designed by Melissa Leapman for Cascade Yarns

Year Round Cardigan

Designed by Melissa Leapman for Cascade Yarns

Skill Level

Intermediate

Sizes

Small/Medium (Medium/Large, 1X). Instructions are for smallest size, with changes for other sizes noted in parentheses as necessary.

Finished Measurements

Bust (buttoned): 37 (44 ½, 52)"

Total length: 22 (23, 23 ½)"

Materials

Cascade Yarn's *Cash Vero DK*, 8 (9, 10) balls of #035

One pair *each* of sizes 5 and 6 knitting needles or size needed to obtain gauge

Five 1" buttons (JHB International's *Fern & Daisies*, Style #71900 was used on sample garment)

Gauge

In Zig-Zag Patt with larger needles, 26 sts and 28 rows = 4"; in Stockinette St Patt with larger needles, 22 sts and 30 rows = 4". **To save time, take time to check gauge.**

Stitch Patterns

Border Pattern (*mult 12 + 1 sts*)

See chart.

Zig-Zag Pattern (*mult 12 + 1 sts*)

See chart.

Stockinette St Pattern

Row 1 (RS): Knit across.

Row 2: Purl across.

Repeat Rows 1 and 2 for patt.

Garter St Pattern

Patt Row: Knit across.

Repeat Patt Row for patt.

Note

For fully-fashioned single decreases: On RS rows, K2, SSK, work across in patt as established until 4 sts rem, ending row with K2tog, K2; on WS rows, P2, P2tog, work across in patt as established until 4 sts rem in row, ending row with SSP, P2.

Back

With smaller needles, CO 121 (145, 169) sts.

Beg Border Patt, and work even until piece measures approx 1" from beg, ending after WS row.

Change to larger needles, beg Zig-Zag Patt, and work even until piece measures approx 6" from beg, ending after Row 8 of patt.

Beg Stockinette St, dec 18 (22, 26) sts evenly across first row, and work even on 103 (123, 143) sts until piece measures approx 13 ½" from beg, ending after WS row.

Shape Armholes

BO 4 (5, 7) sts at beg of next two rows, BO 2 (3, 4) sts at beg of next row rows, then work fully-fashioned decreases each side (see Note) every row 4 (16, 22) times, then every other row 7 (2, 0) times—69 (71, 77) sts rem.

Cont even in patt until piece measures approx 20 ½ (21 ½, 22)" from beg, ending after WS row.

Shape Neck

Next Row (RS): Work across first 17 (18, 21) sts, join second ball of yarn and BO middle 35 sts, work across to end row.

Dec 1 st each neck edge once—16 (17, 20) sts rem each side.

Cont even until piece measures approx 21 (22, 22 ½)" from beg, ending after WS row.

Shape Shoulders

BO 4 (4, 7) sts at beg of next six rows, then BO 4 (5, 6) sts at beg of next two rows.

Left Front

With smaller needles, CO 61 (73, 85) sts.

Beg Border Patt, and work even until piece measures approx 1" from beg, ending after WS row.

Change to larger needles, beg Zig-Zag Patt, and work even until piece measures approx 6" from beg, ending after Row 8 of patt.

Beg Stockinette St, dec 10 (10, 14) sts evenly across first row, and work even on 51 (63, 71) sts until piece measures approx 13 ½" from beg, ending after WS row.

Shape Armhole

BO 4 (5, 7) sts at armhole edge once, BO 2 (3, 4) sts at armhole edge once, then work fully-fashioned decreases at armhole edge (see Note) every row 4 (16, 22) times, then every other row 7 (2, 0) times—34 (37, 38) sts rem.

Cont even in patt until piece measures approx 19 (20, 20 ½)" from beg, ending after RS row.

Shape Neck

BO 6 sts at neck edge once, BO 4 sts at neck edge once, BO 2 sts at neck edge once, then work fully-fashioned decreases (see Note) at neck edge every row 6 (8, 6) times—16 (17, 20) sts rem.

Cont even, if necessary, until piece measures same as back to shoulders.

Shape Shoulders

BO 4 (4, 7) sts at shoulder edge three times—4 (5, 6) sts rem.

Right Front

Same as left front *except* reverse all shaping.

Sleeves

With smaller needles, CO 73 sts.

Beg Border Patt, and work even until piece measures approx 1" from beg, ending after WS row.

Change to larger needles, beg Zig-Zag Patt, and work even until piece measures approx 2" from beg, ending after Row 8 of patt.

Beg Stockinette St, and dec 10 sts evenly across first row.

Cont Stockinette St Patt, and inc 1 st each side every tenth row 1 (1, 3) times—65 (65, 69) sts.

Cont even until sleeve measures approx 7 ½ (7 ½, 8)" from beg, ending after WS row.

Shape Cap

BO 4 (5, 7) sts at beg of next two rows, then work fully-fashioned decreases (see Note) each side every fourth row 0 (5, 7) times, then every other row 15 (9, 7) times—27 sts rem.

BO 3 sts at beg of next four rows—15 sts rem.

BO.

Finishing

Block pieces to measurements.

Sew shoulder seams.

Neckband

With smaller needles and RS facing, pick up and knit 113 sts along neck opening.

Beg Garter St, and work even until neckband measures approx ½" from beg.

Next Row: Knit, dec 15 sts evenly spaced across—98 sts rem.

Cont even until neckband measures approx 1" from beg.

BO.

Buttonband

With RS facing and smaller needles, pick up and knit 102 (108, 111) sts along left front edge, including side of neckband.

Work rows of Garter St until band measures approx 1" from beg. BO.

Place markers for five buttons along band, making the first and last ½" from first neck bind-off and lower edge, respectively, and the others evenly-spaced in between them.

Buttonhole Band

With RS facing and smaller needles, pick up and knit 102 (108, 111) sts along right front edge, including side of neckband.

Work rows of Garter St until band measures approx 1/2" from beg.

Next Row: Work buttonholes opposite markers by binding off 4 sts.

Next Row: Cont in Garter St, and CO 4 sts above the bound-off sts from previous row.

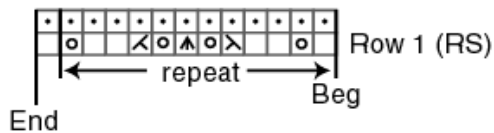
Complete same as buttonband.

Set in sleeves.

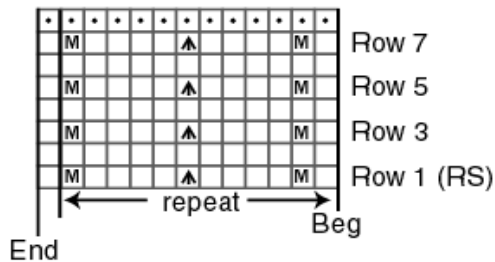
Sew sleeve and side seams.

Sew on buttons.

Border Pattern
(mult 12 + 1 sts)



Zig-Zag Pattern
(mult 12 + 1 sts)



KEY

□ = K on RS; P on WS

• = P on RS; K on WS

M = M1 Knitwise = Insert LH needle under the horizontal strand between two sts from front to back and K it *through back loop*

○ = Yarn over

◁ = K2tog on RS; P2tog on WS

⋈ = SSK on RS; SSP on WS

♠ = Slip 2 sts at once knitwise; K1; p2sso

