

Lana D'Oro  
Kendra Pullover



Design by  
Diane Zangl

# Lana D'Oro Kendra Pullover

By Diane Zangl

Serpentine cables and windowpane panels are used in an allover pattern on this casual pullover. Double cables, echoed by a repeat a bit farther out, are featured front and center. Garter stitch frames the edges and open-neck, stand up collar. Sleeves are terminated in a saddle shoulder.

## **SKILL LEVEL: Intermediate**

**SIZE:** Woman's small (medium, large, extra-large) Instructions are given for smallest size, with larger sizes in parentheses. When only 1 number is given, it applies to all sizes.

## **FINISHED MEASUREMENTS**

**Chest:** 36 (40, 44, 48)"

**Length:** 22½ (23, 24½, 25)"

**MATERIALS** **Cascade Lana D'Oro** hanks (50% superfine alpaca, 50% wool)

219yds/110 grams per hank, 5 (6, 6, 7) hanks #1036 Deep Red

Size 5 (3.75mm) needles

Size 6 (4mm) needles *or size needed to obtain gauge*

Cable needle (cn)

Stitch markers and holders

(1) Pewter clasp

## **GAUGE**

20 sts and 30 rows = 4" in Cable and Block pat with larger needles

To save time and ensure proper fit, take time to check gauge.

## **DESIGNER NOTES**

Always slip first st at neck placket to maintain a neat chained edge at opening.

**For Store Models:** Some Shop models were knit on larger needles and I-Cord worked rather than cables.

## **STITCH GLOSSARY**

**Pm:** Place marker.

**Wyif:** With yarn in front.

**Wyib:** With yarn in back.

## **BACK**

With smaller needles, cast on 90 (100, 110, 120) sts. Knit 7 rows. Change to larger needles.

Referring to sizing at **bottom** of chart, work even in Cable and Block pat until back measures 15 (15, 16,16)" from beg, ending with a WS row.

## **Shape armhole**

Bind off 12 (15, 18, 20) sts at beg of next 2 rows – 66 (70, 74, 80) sts.

Work even in established pat until armhole measures 5 (5½, 6, 6½)" above bound-off underarm sts, ending with a WS row. Bind off all sts. Mark 18 (19, 20, 21) sts at each end for shoulders.

## **FRONT**

Work as for back until armhole measures 1 (1, 2, 2)" above bound-off underarm sts, ending with a WS row.

### **Divide for neck opening**

Mark center front.

**Next row (RS):** Work in established pat to 8 sts before marker, place new marker, k8, remove center marker, place rem 33 (35, 37, 40) sts on holder for right front.

**Row 2:** Sl 1 knitwise wyif, k7, work in established pat to end of row.

Slipping first st of every WS row, and keeping sts at front edge in garter st, work even in pat on remaining sts until armhole measures 5 rows less than back above bound-off underarm sts, ending with a RS row.

### **Shape neckline**

**Next row (WS):** Bind off 11 (12, 13, 15) sts, work to end of row. Continue in established pat, dec 1 st at neck edge every row 4 times. Bind off remaining 18 (19, 20, 21) sts.

## **RIGHT FRONT**

Sl sts from holder to needle. With RS facing, join yarn at neck edge.

**Next row (RS):** Sl 1 knitwise wyib, k7, pm, work to end of row.

**Row 2:** Work in established pat to marker, k8.

Slipping first st of every RS row, and keeping sts at front edge in garter st, work even in pat on remaining sts until armhole measures 5 rows less than back above bound-off underarm sts, ending with a WS row

**Next row (RS):** Bind off 11 (12, 13, 15) sts, work to end of row. Continue in established pat, dec 1 st at neck edge every row 4 times. Bind off remaining 18 (19, 20, 21) sts.

## **SLEEVES**

With smaller needles, cast on 50 (56, 56, 60) sts.

Knit 11 rows, change to larger needles. Referring to sizing at **top** of chart, work even for 4 rows.

Inc 1 st each end on next and every following 8 (8, 6, 6)th row 13 (12, 15, 15) times, working added sts into block pat only – 76 (80, 86, 90) sts.

Work even until sleeve measures 18 (18½, 18½, 19)" from beg, ending with a WS row.

### **Shape sleeve cap**

Mark each end st for underarm. Work even for 16 (20, 24, 28) rows more.

Bind off 26 (28, 31, 33) sts at beg of next 2 rows.

Place rem 24 sts on holder to be worked later for saddle shoulder. **Do not** cut yarn.

### **Join left front and back at shoulder**

With LH needle and RS facing, beg at neck edge, pick up front strand of each bound-off st along left front shoulder. With RH needle and RS facing, beg at neck edge, pick up front strand of each bound-off st along left back shoulder.

**Note:** Tips of circular needle will point towards armhole edge.

Sl sleeve sts from holder to LH needle. Sl 1 st from RH needle to LH needle. Pick up attached sleeve yarn.

**Joining row:** \*K2tog, work in pat across 22 sts, ssk, sl 1 p-wise wyib, turn, p2tog-tbl, p22, p2tog, sl 1 pwise wyif, turn. Rep from \*until all picked-up sts have been worked. Bind off rem sts, dec 2 sts in each cable section.

**Join right front and back at shoulder**

With LH needle and RS facing, beg at neck edge, pick up front strand of each bound-off st along left back shoulder.

With RH needle and RS facing, beg at neck edge, pick up front strand of each bound-off st along left front shoulder.

**Note:** Tips of circular needle will point towards armhole edge. Continue as for left saddle shoulder Joining Row.

**COLLAR**

With smaller needle and RS facing, pick up and kint 1 st in every bound-off neck st and 3 sts for every 4 rows around remainder of neck.

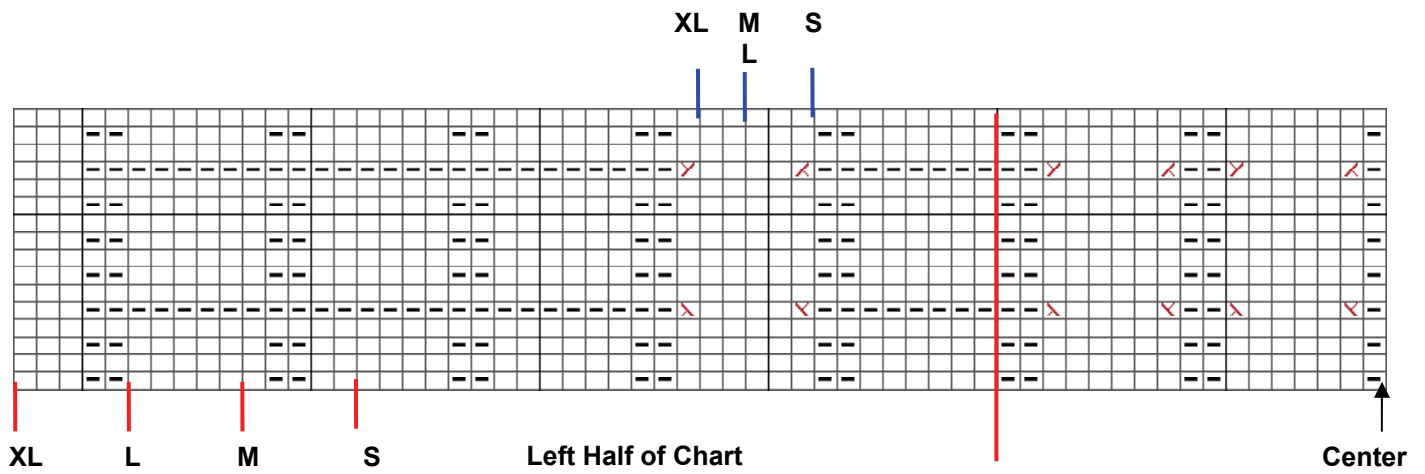
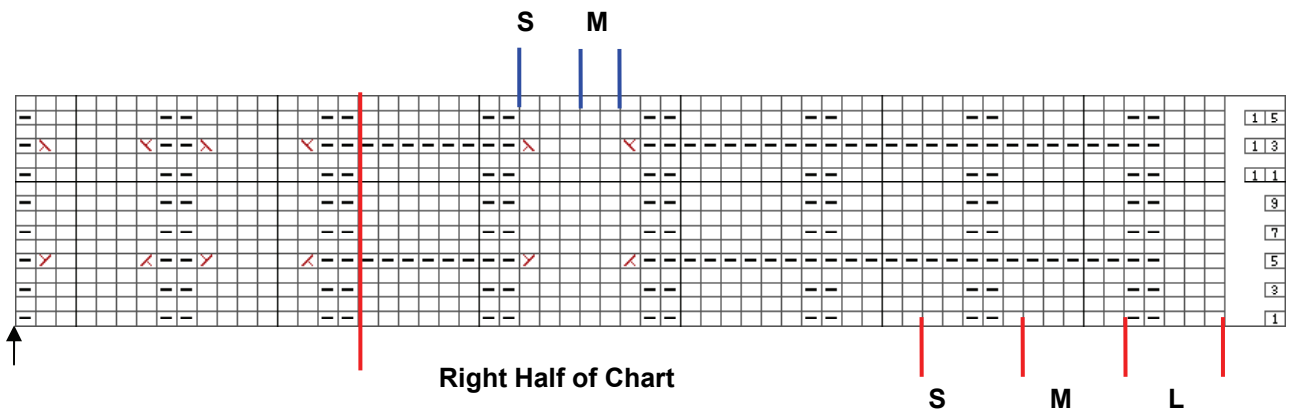
Work even in garter st for 9 rows, slipping first st of every row.

**Next 2 rows:** Sl 1, ssk, work to last 3 sts, k2tog, k1.

Bind off all sts.

**ASSEMBLY**

Sew bound-off edges of sleeves to armhole, matching underarm markers to first bound-off st of body. Sew sleeve and side seams. Sew on clasp.



### Stitch

K on RS, p on WS

P on RS, k on WS

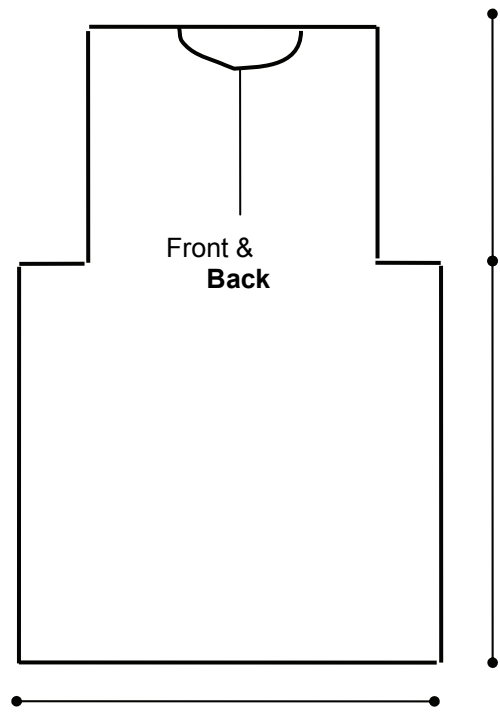


Sl 3 to cn and hold in back,  
k3, k3 from cn.



Sl 3 to cn and hold in front,  
k3, k3 from cn.

$3\frac{1}{4}$  ( $3\frac{1}{2}$ ,  $3\frac{3}{4}$ ,  $4\frac{1}{4}$ )"       $6$  ( $6\frac{1}{2}$ ,  $7$ ,  $7\frac{1}{2}$ )"

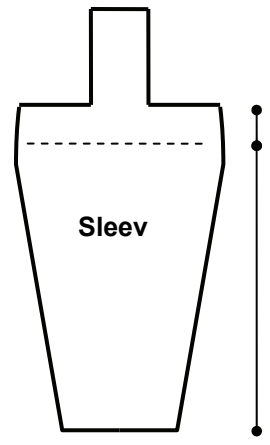


$5$  ( $5\frac{1}{2}$ ,  $6$ ,  $6\frac{1}{2}$ )"

$15$  ( $15$ ,  $16$ ,  $16$ )"

$18$  ( $20$ ,  $22$ ,  $24$ )"

$15$  ( $16$ ,  $17$ )"



$2\frac{1}{2}$  ( $3$ ,  $3\frac{1}{2}$ )"

$18$  ( $18\frac{1}{2}$ ,  $18\frac{1}{2}$ )"

$10$  ( $11$ ,  $11$ )"