



W249

CHILDS FAIR ISLE PULLOVER  
IN CASCADE 220 SUPERWASH



DESIGNED BY MELISSA LEAPMAN

# Child's Fair Isle Pullover

Designed by Melissa Leapman for Cascade Yarns

## Sizes

Child's Size 2 (4, 6, 8). Instructions are for smallest size, with changes for other sizes noted in parentheses as necessary.

## Finished Measurements

Chest: 26 (29, 32, 36)"

Length: 14 (15, 16, 17)"

## Materials

- ◆ Cascade Yarn's *Superwash* 220, 1 (2, 2, 3) hanks of #841 (A), 2 (3, 3, 4) hanks of #804 (B), 1 (2, 2, 3) hanks *each* of #886 (C) and #850 (D)
- ◆ One pair each of sizes 6 and 8 knitting needles or size needed to obtain gauge

## Gauge

In Fair Isle Patt with larger needles, 20 sts and 20 rows = 4". **To save time, take time to check gauge.**

## K1 P1 Rib Patt *(over mult. 2 sts)*

Row 1 (RS): \*K1, P1. Repeat from \* across.

Patt Row: As Row 1.

## Stockinette St Patt *(over any number of sts)*

Row 1 (RS): Knit across.

Row 2: Purl across.

Repeat Rows 1 and 2 for patt.

## Fair Isle Patt

See chart.

## Back

With smaller needles and A, CO 64 (72, 80, 90) sts.

Change to B, beg K1 P1 Rib Patt, and work even until piece measures approx 1 ½ (2, 2, 2)" from beg, ending after WS row, inc 1 st at beg of last row—65 (73, 81, 91) sts.

Change to larger needles, beg Fair Isle Patt in Stockinette St, and work even until piece measures approx 7 ½ (8, 8 ½, 9)" from beg, ending after WS row.

### **Shape Armholes**

BO 8 (9, 11, 13) sts at beg of next two rows—49 (55, 59, 65) sts rem.

Cont even until piece measures approx 12 ½ (13 ½, 14 ½, 15 ½)" from beg, ending after WS row.

### **Shape Neck**

**Next Row (RS):** Work across first 12 (15, 15, 18) sts, join second ball of yarn and BO middle 25 (25, 29, 29) sts, work to end row.

Work both sides at once with separate balls of yarn and dec 1 st each neck edge once—11 (14, 14, 17) sts rem each side.

Cont even until piece measures approx 13 (14, 15, 16)" from beg, ending after WS row.

### **Shape Shoulders**

BO 4 (5, 5, 6) sts at beg of next four rows, then BO 3 (4, 4, 5) sts at beg of next two rows.

## **Front**

Same as back.

## **Sleeves**

With smaller needles and A, CO 32 (32, 36, 36) sts.

Change to B, beg K1 P1 Rib Patt, and work even until piece measures approx 1 ½ (2, 2, 2)" from beg, ending after WS row, inc 1 st evenly across last row—33 (33, 37, 37) sts.

Change to larger needles, beg Fair Isle Patt in Stockinette St, and inc 1 st each side every other row 0 (5, 4, 7) times, every fourth row 10 (9, 10, 10) times, then every sixth row 1 (0, 0, 0) times, working new sts into patt as they accumulate—55 (61, 65, 71) sts.

Cont even until piece measures approx 12 ¼ (13 ¼, 14, 15 ½)" from beg, ending after WS row.

BO.

## Finishing

Sew left shoulder seam.

### Neckband

With RS facing, smaller needles, and B, pick up and knit 68 (68, 72, 72) sts around neckline.

**Next Row (WS):** \*K1, P1. Repeat from \* across.

Repeat last row until band measures approx 1" from beg.

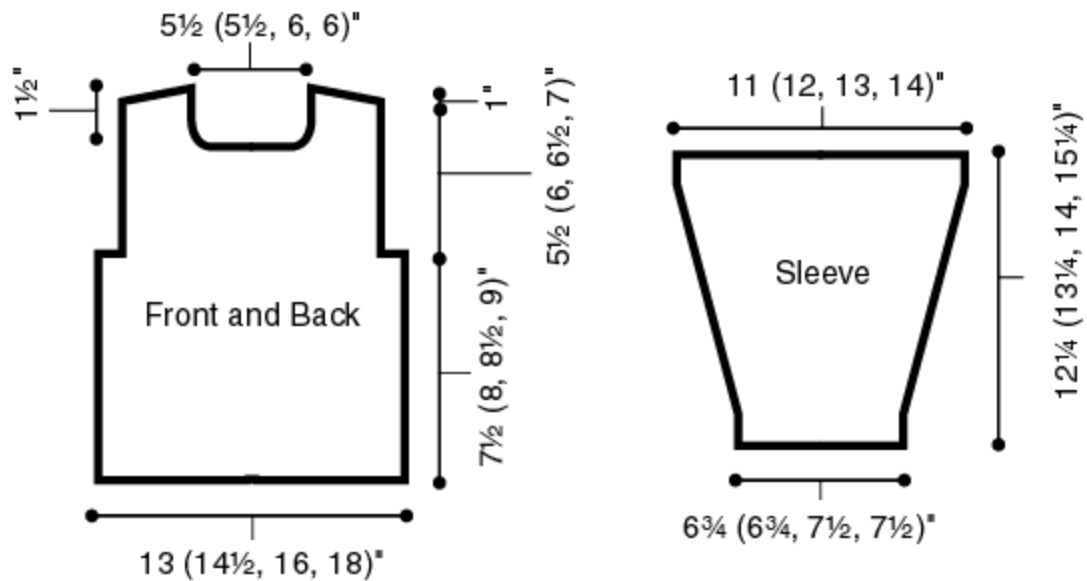
Change to A, work one more row of rib.

**Next Row:** BO loosely in patt.

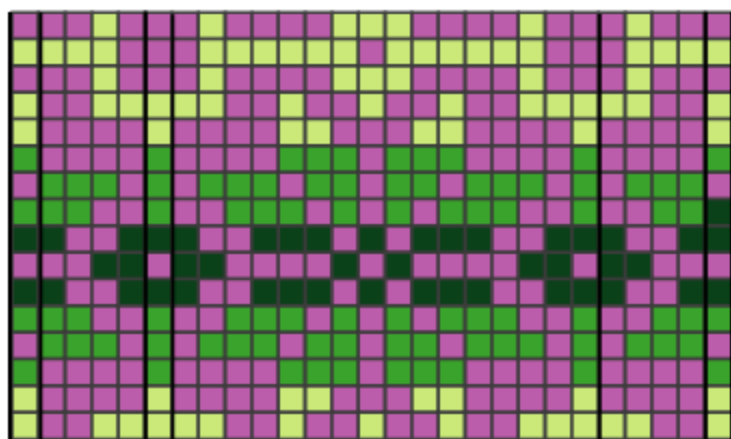
Sew right shoulder seam, including side of neckband.

Set in sleeves.

Sew sleeve and side seams.



### Fair Isle Pattern



Row 15  
 Row 13  
 Row 11  
 Row 9  
 Row 7  
 Row 5  
 Row 3  
 Row 1 (RS)

← 16-st repeat →

Beg Sizes 2 and 6  
 Front and Back  
 Beg Row 1 of  
 Sizes 2 and 4 Sleeves

End Sizes 2 and 6  
 Front and Back  
 Beg Row 1 of  
 Sizes 2 and 4 Sleeves

Beg Size 4 Front and Back

End Size 4 Front and Back

Beg Size 8 Front and Back

End Size 8 Front and Back

Color Key

- = A
- = B
- = C
- = D

Stitch Key □ = K on RS; P on WS