



W259

Cascade Rustic Hooded Coat



Designed by Susie Bonell

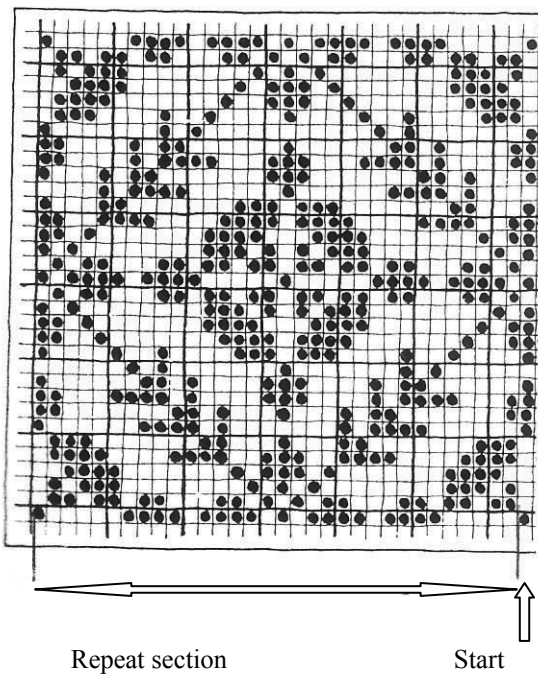
RUSTIC HOODED COAT

Designed by Susie Bonell

Materials: Cascade Yarns Rustic: Color A 6 skeins, color B 4 skeins
Needles: Size 7's circulars 36" for trim, 8's circular 36" for body
Yarn Needle

Finished Measurements: 44" approx.

Gauge: 4.5 sts = 1", 6 rows = 1" on size 8's



Full motif 33 sts. by 33 rows. Repeat section 32 sts as indicated by arrow.

NOTE: Coat is worked in one piece to armholes and divided for front and back in Stockinette stitch (right side knit, wrong side purl.)

COAT

With size 7 needles and color B cast on 225 sts and work in garter stitch (knit every row) for 1 ½" ending on wrong side. Change to size 8 needles and begin color chart at the bottom of the chart on the far right using color B for the black dots and color A for the background. (The first stitch on the graph is worked only once at the beginning of the row on the right side, and at the end of the row on the wrong side. Repeat begins at the stitch to the left.) There will be 7 motif repeats around the bottom. Place a marker at the end of each repeat for ease in working. Work 33 rows of 1st motif.

Next row (wrong side) work first motif as established, purl across with color B to 1 st before last marker, move marker so there are 33 sts remaining and work complete motif of 33 sts. Maintaining the motifs at center fronts, work garter st in color B around body until there are 2 ridges on the right side.

Working motifs as established, work 3 sts after marker in color B, center section in color A to 3 sts before last marker, work 3 sts in color B and remaining motif all in stockinette stitch. Continue in this manner until body measures 19", ending on wrong side row.

Divide for Armholes

Continue working motifs on the fronts and work across 48 sts (including motif), bind off 16 sts, work across back until there are 97 sts on right needle, bind off 16 sts, work to end. Place back stitches and first front stitches on holders. Working on last stitches worked for front, continue with motif and adjacent 3 sts as established and work even until front measures 6" from armhole bind off.

Shape Neck

Maintaining remaining pattern at neck edge, bind off 5 sts.

Bind off 2 sts on next 3 neck edge rows.

Decrease 1 st every other row at neck edge 6 times. (31 sts)

Work until armhole measures 11", bind off.

Work other side to correspond.

Work back until armhole measures 11" and bind off.

SLEEVES

With size 7 needles and color B, cast on 65 sts. Work in garter st for 1 ½" ending on wrong side. Change to size 8 needles.

Bringing new stitches into pattern, begin motifs, work 33 rows of motif followed by garter st rows as for body in color B, AT THE SAME TIME, increasing 1 st each side every 1" to 99 sts.

Work until sleeve measures 17 ½". Bind off.

Sew shoulders together. Weave in ends.

HOOD

With right side facing and color A pick up and knit 33 sts up R front neck edge, place marker, pick up 18 sts, place marker for center back, pick up 18 sts, place marker, pick up 33 sts down left front. Purl back in color A.

Begin working full motifs over 33 sts at neck edges with 3 sts in color B along side as for body. Increase 1 st each side of marker every 1 ½" 4 times.

Work even until hood measures 8", ending on wrong side.

Dec Row: Work to 3 sts before center marker, K2 tog, K1, sl marker, K1, SSK, work to end.

Next Row: Purl.

Repeat these 2 rows 12 times. Bind off at 15".

Sew top seam of hood.

Sew sleeve seam. Sew sleeves to coat.

FRONT TRIM

With size 7 needles and color B, cast on 11 sts.

Work in garter st until piece measures around entire front edge including hood, slightly stretched. Bind off,

Sew on front trim.

Steam slightly as needed.