

# CASCADE YARNS

DISTRIBUTOR OF FINE YARN

W285

Lana D'Oro

Arctic Hat



Designed by Diane Zangl

# Lana D'Oro Arctic Hat

## by Diane Zangl

Fair Isle motifs go vertical in this winter set. The hat is shaped at the top by means of equally spaced decreases. The hemmed brim adds extra warmth at the lower edge. Mittens are worked as a traditional Northern manner, with thumb gussets and a shaped top. Small chcks decorate the palm; the hemmed cuff repeats the hat's silhouette.

## SKILL LEVEL

## SIZE

**Hat:** Woman's-one size fits most

**Mitts:** S/M (M/L)

Instructions are given for smallest size, with larger sizes in parentheses. When only 1 number is given, it applies to all sizes. Model shown in size

## FINISHED MEASUREMENTS

**Hat:**

20" circumference

**Mitts:**

Length: 9¼ (9¾)"

Circumference: 6½ (7¼)"



**Medium**

## MATERIALS

**Cascade Lana D'Oro** (50% superfine alpaca, 50% wool) 50g/110 yds per hank: 2 hanks **each** #1064 Denim Heather and #1086 Gray Heather

Size 4 (3.5mm) 16" circular and double-pointed needles

Size 5 (3.75mm) 16" circular and double-pointed needles **or size needed to obtain gauge**

Stitch holders and markers

## GAUGE

26 sts x 26 rnds = 4" in color pat with larger needles

To save time and ensure proper fit, take time to check gauge.

## DESIGNER NOTES

When working color pattern, carry yarns loosely across back of work to avoid puckering.

## STITCH GLOSSARY

**CDD (Centered Double Decrease):** Sl 2 sts tog knitwise to RH needle, knit next st, pass 2 sl sts over knit st. The center st will lie on top.

**Pm:** Place marker.

**M1L (Make 1 Left):** Make a clockwise loop and place on RH needle.

**M1R (Make 1 Right):** Make a counter-clockwise loop and place on RH needle.

### **Palm Pattern:**

**Rnd 1:** K1 blue, \*k1 gray, k1 blue; rep from \* as directed.

**Rnd 2:** K1 gray, \*k1 blue, k1 gray; rep from \* as directed.

Rep Rnds 1-2 for pat.

## HAT

### Hem

With gray and smaller circular needle, cast on 120 sts. Join, placing marker between first and last st.

Work even in St st for 14 rnds. Purl 1 rnd.

Change to larger needle and work even from Chart A through Rnd 13. Fold hem to inside of hat.

**Joining rnd:** Insert RH needle into next st, then into first cast-on st, k2tog with blue. Continue to work k2tog around, joining both layers.

Work Rnds 15-17 of Chart A.

Referring to Chart B, [work from A to B] 4 times.

Begin top decs on Rnd 35, changing to dpn when necessary. 16 sts are decreased every rnd 4 times, then 8 sts are decreased every rnd 3 times. Work a CDD as a final dec on Rnd 38 in small panel, and on Rnd 42 of large panel – 24 sts remain when all decs have been completed. **Note:** Decs are made by working ssk on left-slanting diagonals and k2tog on right-slanting diagonals. Always work decreases with gray so the 3 vertical lines between panels remain constant. (see photo above)

**Next rnd:** With gray, k2tog around – 12 sts.

Cut yarn and draw through remaining sts twice.

Chart B

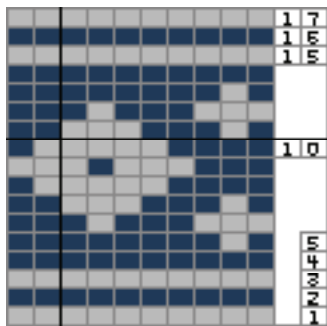
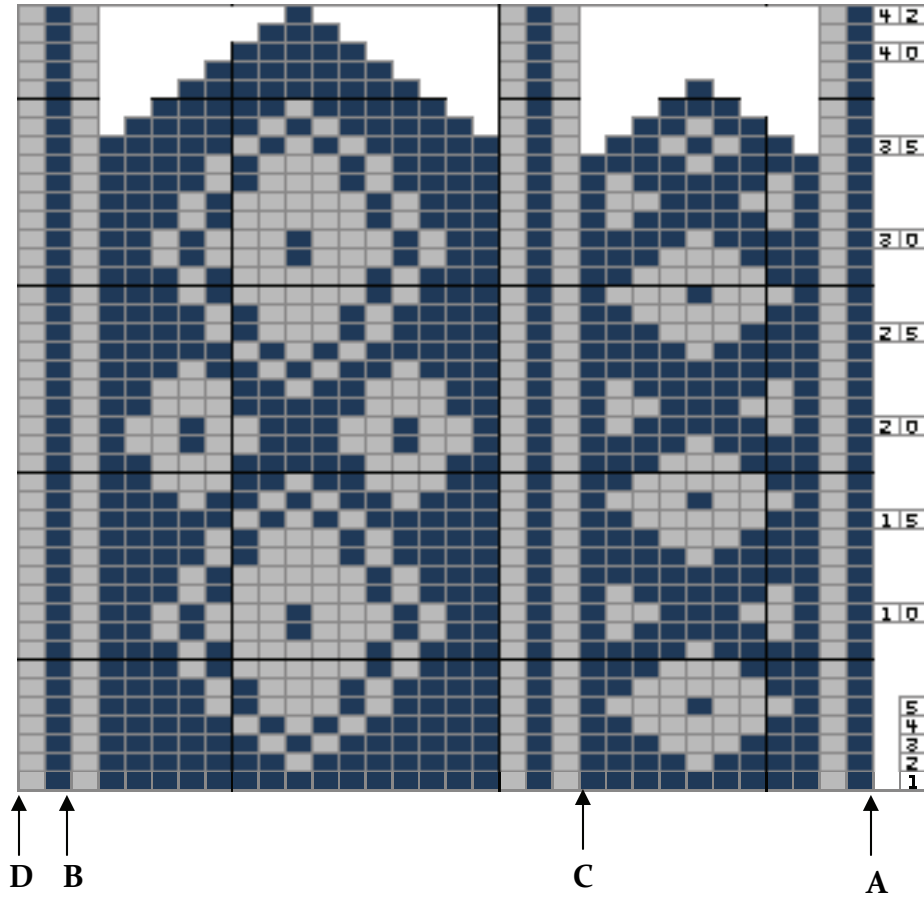


Chart A

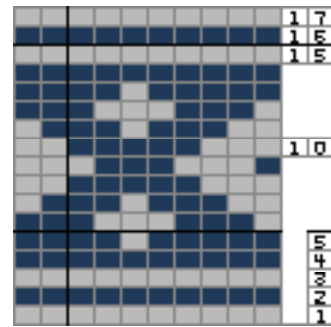


Chart C