



W360

Cascade Pima Tencel
Sandy Shawl



Designed By Patti Watter

Pima Tencel Sandy Shawl

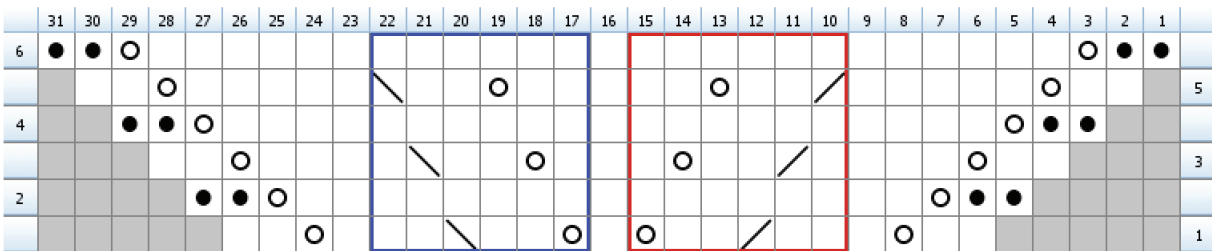
by Patti Waters

Materials: 2 balls of Cascade Pima Tencel, color # 9201 50% Peruvian Pima Cotton, 50% Tencel, 89yds, 50 g, US # 8/5 mm needle
Circular is preferable to hold all the sts

Directions:

Cast on 2 sts and work 31 rows in garter st. From the side of the work pick up and knit 15 sts and from the bottom pick up and knit 2 sts, (19 sts total). For the next 6 rows work chart once across all sts. It will be helpful to place a marker before the center st before continuing. On the all remaining rows repeat the red outlined pattern until you reach the center st, and repeat the blue outlined pattern until you reach the final 3 sts on row 1 of pattern (5 on row 3 and so forth). Continue working in pattern until you have worked rows 1-6 of pattern 12 times total. Bind off: ssk, *slip st from right needle to left and ssk, repeat from * until there is one st remaining. Cut the yarn and pull through the last st. It may be beneficial to block your shawl when finished.

Chart:



Legend:

- No Stitch

- knit

- yo

- k2tog

- ssk

- purl