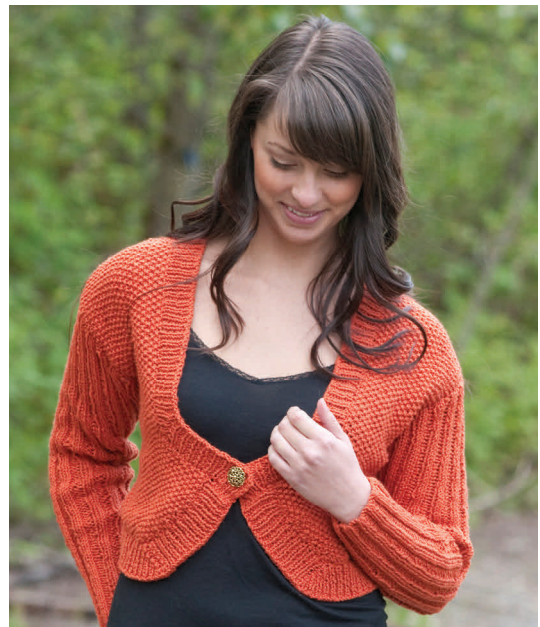




W390

Cascade Luna
Seed Stitch Cardigan



Designed by Marilyn Peters

Luna Seed Stitch Cardigan

Designed by Marilyn Peters

To fit sizes: Bust: 32" (34", 36", 38", 40", 42") Length: 16" (16", 16", 17", 17", 17") Sleeve length: 18" (18", 18", 19", 19", 19") Gauge: 5 sts x 6 rows = 1" using 5mm (US8) needles in seed stitch	Materials: 9 (9, 10, 10, 10) x 50g balls Luna (Peruvian cotton) by Cascade Yarns – color #758 1 pair each 4mm (US6) and 5mm (US8) needles 1 stitch holder Skill level: Easy
--	---

Left Front

Using 5mm (US8) needles cast on 22 (24, 26, 28, 30, 32) sts.

Working in seed (moss) stitch, incr. 1 st at end of first row (denoting front edge).

Work 1 row without shaping.

Incr. 1 st at end of next and foll. alt. rows to 32 (34, 36, 38, 40, 42) sts.

Work 11 rows without shaping. Dec. last 5 sts on the next row.

*Dec. 1 st at neck edge on every row to 20 (22, 24, 26, 28, 30) sts.

Work without shaping until front measures 15" (15", 15", 16", 16", 16"). BO.*

Right Front

Using 5mm (US8) needles cast on 22 (24, 26, 28, 30, 32) sts.

Work in seed (moss) stitch, incr. 1 st at beg. first row (denoting front edge).

Work 1 row without shaping.

Incr. 1 st at beg. of next and foll. alt. rows to 32 (34, 36, 38, 40, 42) sts.

Work 11 rows without shaping. Dec. first 5 sts on next row.

Work the same as for left front from * to *.

Back

Using 5mm (US8) needles cast on 66 (70, 76, 80, 86, 90) sts.

Work in double rib until back measures 16" (16", 16", 17", 17", 17"), finishing on a wrong side row.

Next row: BO20 (22, 24, 26, 28, 30), double rib 24 (26, 28, 30, 32, 34) and leave on holder, BO20 22, 24, 26, 28, 30).

Sleeves *(make 2 the same)*

Using 4mm (US6) needles cast on 40 (40, 40, 40, 44, 44) sts.

Work in double rib for 20 rows, incr. 1 st at each end of last row – 42 (42, 42, 42, 46, 46) sts.

Change to 5mm (US8) needles and work in double rib, incr. 1 st at each end of 7th and every foll. 8th row to 56 (56, 56, 56, 60, 60) sts, then every foll. 6th row to 66 (66, 66, 66, 70, 70) sts, then every alt. row to 80 (80, 80, 80, 84, 84) sts.

Work without shaping until sleeve measures 18" (18", 18", 19", 19", 19") or desired length. BO loosely.

Lower Right Front Band

Using 4mm (US6) needles pick up 46 (48, 50, 52, 54, 56) sts from lower side edge to lower front edge.

Row 1: Rib 20 (22, 24, 26, 28, 30), incr. 1, incr. 1, rib to end of row

Row 2: Rib

Rep. rows 1 and 2 until 10 rows are completed. BO.

Lower Left Front Band

Using 4mm (US6) needles pick up 46 (48, 50, 52, 54, 56) sts from lower front edge to lower side edge.

Row 1: Rib to last 24 (26, 28, 30, 32, 34) sts, incr. 1, incr. 1, rib to end of row

Row 2: Rib

Rep. rows 1 and 2 until 10 rows are completed. BO.

Neckband

Using 4mm (US6) needles pick up 77 (77, 77, 83, 83, 83) sts from right front neck edge to holder, double rib 24 (26, 28, 30, 32, 34) sts on holder, pick up 77 (77, 83, 83, 83) sts to left front neck edge – 178 (180, 182, 194, 196, 198) sts.

Row 1: Work in rib for left neckband, then double rib across back neckband and work in rib for right neckband

Row 2: Rib 17 (18, 19, 21, 22, 23), work 2 tog twice, work in rib and double rib to last 21 (22, 23, 25, 26, 27) sts, work 2 tog twice, rib to end of row.

Row 3: Rib and double rib

Row 4: (*buttonhole row*) Rib 4, yrn twice, k3tog, rib 10 (11, 12, 14, 15, 16), work 2 tog twice, rib and double rib to end of row

Row 5: Rib and double rib

Rep. rows 2 and 3

Row 8: Rib and double rib with no decreasing. BO.

Finishing

Sew sleeves into place. Sew sleeve and side seams. Sew on button and tie in ends.