



W422

Cascade Cash Vero Ariana Sweater



Designed by Melissa Leapman

Cash Vero Ariana
Designed by Melissa Leapman

Sizes

Small (Medium, Large, 1X). Instructions are for smallest size, with changes for other sizes noted in parentheses as necessary.

Finished Measurements

Bust: 34 (40, 46, 52)"

Total length: 24 (24 ½, 24 ½, 25)"

Materials

Cascade Yarn's *Cash Vero*, 15 (17, 19, 21) balls of #040

One pair of sizes 6 and 8 knitting needles or size needed to obtain gauge

One cable needle

Gauge

In Cable Patt with larger needles, 32 sts and 24 rows = 4";

In Garter Rib Patt with larger needles, 20 sts and 28 rows = 4". **To save time, take time to check gauge.**

Cable Patt (*mult 24 + 16 sts*)

See chart.

Garter Rib Patt (*over mult. 4 + 2 sts*)

Row 1 (RS): K1, *K1, P2, K1. Repeat from * across, ending row with K1.

Row 2: Purl across.

Repeat Rows 1 and 2 for patt.

Note

For fully-fashioned increases: K2, M1, work across in patt as established until 2 sts rem, ending row with M1, K2; on subsequent rows, work these new sts into patt.

Back

With larger needles, CO 136 (160, 184, 208) sts.

Beg Cable Patt, and work even until piece measures approx 14 ½" from beg, ending after WS row.

Shape Armholes

BO 12 (24, 36, 36) sts at beg of next two rows—112 (112, 112, 136) sts rem.

Cont even in patt as established until piece measures approx 23 (23 ½, 23 ½, 24)" from beg, ending after WS row.

Shape Shoulders

BO 13 (13, 13, 17) sts at beg of next four rows, then BO 14 (14, 14, 18) sts at beg of next two rows—32 sts rem.

BO.

Front

Same as back until piece measures approx 21 (21 ½, 21 ½, 22)" from beg, ending after WS row.

Shape Neck

Work across first 50 (50, 50, 62) sts; join second ball of yarn and BO middle 12 sts, work to end row.

Work both sides at once with separate balls of yarn and BO 6 sts each neck edge once, BO 2 sts each neck edge once, then dec 1 st each neck edge once—40 (40, 40, 52) sts rem each side.

Cont even, if necessary, until piece measures same as back to shoulders.

Shape Shoulders

Same as for back.

Sleeves

With larger needles, CO 50 (54, 54, 58) sts.

Beg Garter Rib Patt, and work even until piece measures approx ½" from beg, ending after WS row.

Cont patt, and work fully-fashioned increases (see Notes) each side every other row 0 (5, 11, 16) times, then every fourth row 18 (13, 7, 3) times, working new sts into patt as they accumulate—86 (90, 90, 96) sts.

Cont even until sleeve measures approx 12 ½ (12 ½, 12 ½, 11 ½)" from beg, ending after WS row.

BO.

Finishing

Sew right shoulder seam.

Neckband

With RS facing and smaller needles, pick up and knit 98 sts evenly along neckline.

Next Row: *P2, K2; repeat from * across, ending row with P2.

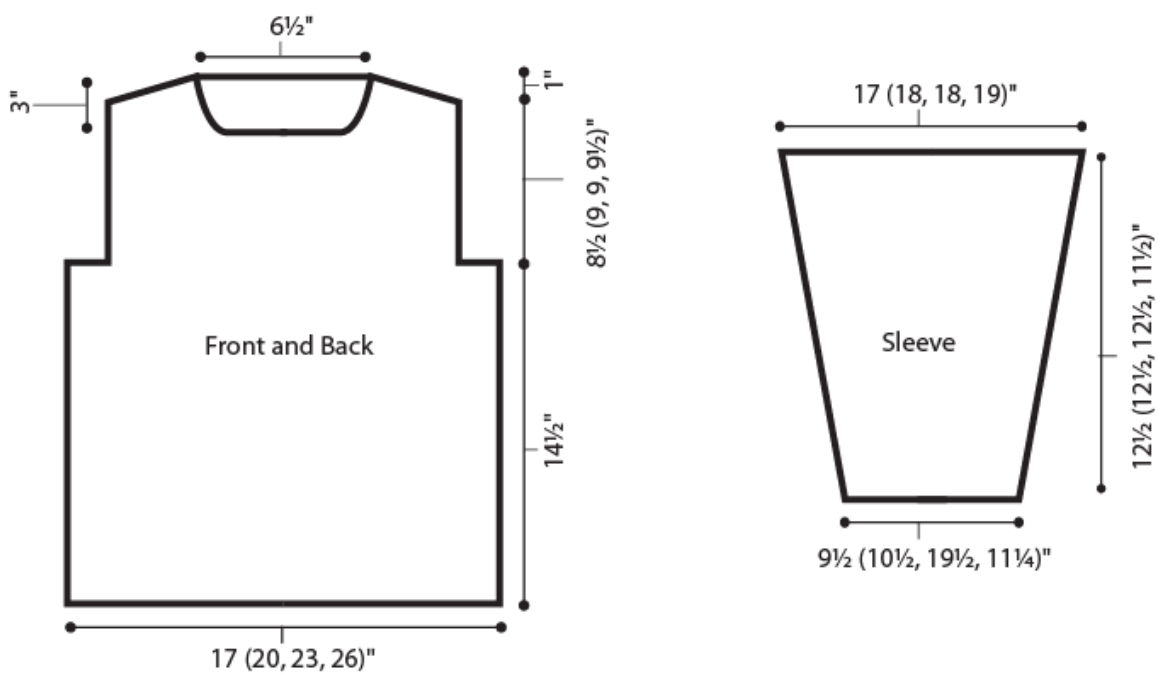
Next Row: *K2, P2; repeat from * across, ending row with K2.

Repeat last two rows until neckband measures approx 3 ½".

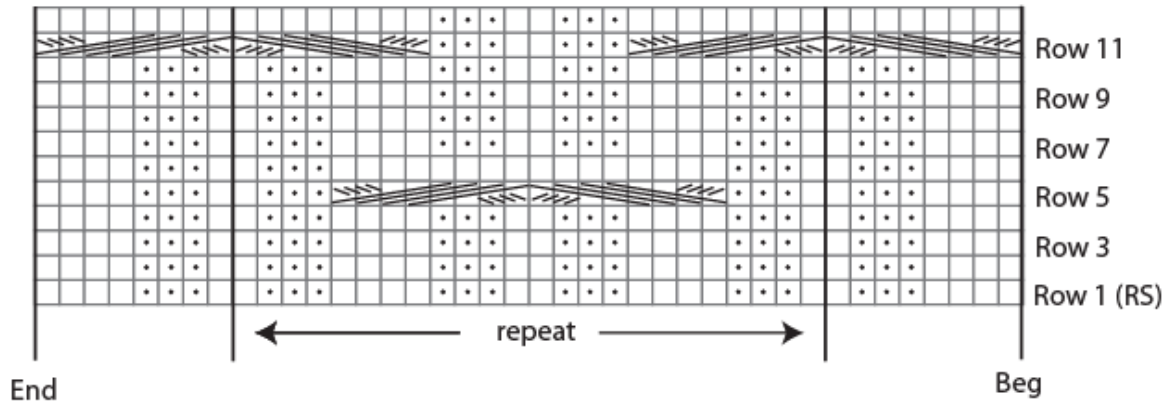
BO *loosely* in patt.

Sew left shoulder seam, including side of neckband.

Set in sleeves. Sew sleeve and side seams.




Cable Pattern



KEY □ = K on RS; P on WS

 • = P on RS; K on WS

 = Slip 4 sts onto cn and hold in front; K4; K4 from cn

 = Slip 4 sts onto cn and hold in back; K4; K4 from cn